





## 1. SCRUB TOPS

● Landau Proflex Women's 3-Pocket V-Neck Scrub Top	3
● Landau Proflex Women's 3-Pocket Mock Wrap Neck Scrub Top	4
● Landau Proflex Women's 2-Pocket V-Neck Scrub Top	5
● Landau Proflex Women's 3-Pocket V-Neck Scrub Top	6
● Landau Proflex Women's 5-Pocket Notch Collar Scrub Top	7
● Landau Proflex Women's 3-Pocket V-Neck Maternity Scrub Top	8
● Landau Essentials Women's Long-Sleeve Tee	9
● Landau Scrub Zone Women's 3-Pocket V-Neck Scrub Top	10
● Landau Scrub Zone Women's 2-Pocket Mock Wrap Neck Scrub Top	11
● Landau Scrub Zone Unisex 1-Pocket V-Neck Scrub Top	12
● Landau Essentials Unisex 1-Pocket V-Neck Scrub Top	13
● Landau Essentials Women's 4-Pocket V-Neck Scrub Top (SKU: 8111)	14
● Landau Essentials Women's 4-Pocket V-Neck Scrub Top (SKU: 8219)	15
● Landau Essentials Women's 4-Pocket V-Neck Scrub Top (SKU: 8232)	16
● Landau Essentials Mens's 1-Pocket V-Neck Scrub Top	17
● Landau Proflex Men's 4-Pocket V-Neck Scrub Top	18
● Landau Proflex Men's 2-Pocket V-Neck Scrub Top	19
● Landau Proflex Men's 6-Pocket Notch Collar Scrub Top	20
● Landau Essentials Men's 5-Pocket V-Neck Scrub Top	21
● Landau Essentials Men's 1-Pocket V-Neck Scrub Top	22

## 2. SCRUB PANTS

● Landau Proflex Women's Banded-Bottom Jogger Scrub Pants	23
● Landau Proflex Women's Straight-Leg Cargo Scrub Pants	24
● Landau Proflex Women's Straight-Leg Yoga Scrub Pants	25
● Landau Proflex Women's Tapered-Leg Cargo Scrub Pants	26
● Landau Proflex Women's Pwrcor Compression Waist Scrub Pants	27
● Landau Proflex Unisex Straight-Leg Cargo Scrub Pants	28
● Landau Proflex Women's Bootcut Maternity Scrub Pants	29
● Landau Essentials Unisex Straight-Leg Scrub Pants	30
● Landau Essentials Women's Tapered-Leg Scrub Pants	31
● Landau Scrub Zone Women's Straight-Leg Cargo Scrub Pants	32
● Landau Scrub Zone Women's Straight-Leg Cargo Scrub Pants	33
● Landau Essentials Women's Straight-Leg Scrub Pants	34
● Landau Essentials Women's Flare-Leg Scrub Pants	35
● Landau Essentials Women's Straight-Leg Cargo Scrub Pants	36
● Landau Essentials Women's Straight-Leg Cargo Scrub Pants	37
● Landau Scrub Zone Unisex Straight-Leg Cargo Scrub Pants	38
● Landau Essentials Men's Straight-Leg Cargo Scrub Pants	39
● Landau Essentials Men's Straight-Leg Cargo Scrub Pants	40

● Landau Proflex Men's Banded-Bottom Jogger Scrub Pants	41
● Landau Proflex Men's Straight-Leg Cargo Scrub Pants	42
● Landau Essentials Men's Straight-Leg Scrub Pants	43
● Landau Essentials Men's Straight-Leg Cargo Scrub Pants	44

## 3. SCRUB JACKETS

● Landau Proflex Women's Warm-Up Scrub Jacket	45
● Landau Scrub Zone Women's Warm-Up Scrub Jacket (SKU: 70227)	46
● Landau Scrub Zone Women's Warm-Up Scrub Jacket (SKU: 75221)	47
● Landau Scrub Zone Unisex Warm-Up Scrub Jacket	48
● Landau Essentials Women's Warm-Up Scrub Jacket (SKU: 7525)	49
● Landau Essentials Women's Warm-Up Scrub Jacket (SKU: 7535)	50
● Landau Proflex Men's Warm-Up Scrub Jacket	51
● Landau Essentials Men's Warm-Up Scrub Jacket	52

## 4. LAB COATS

● Landau Women's 2-Pocket Consultation Jacket	53
● Landau Proflex Women's 2-Pocket Mid-Length Lab Coat	54
● Landau Women's 5-Pocket Full-Length Lab Coat	55
● Landau Women's 3-Pocket Full-Length Lab Coat (SKU: 3155)	56
● Landau Women's 5-Pocket Full-Length Notebook Lab Coat	57
● Landau Women's 3-Pocket Full-Length Lab Coat (SKU: 3172)	58
● Landau Unisex 2-Pocket Full-Length Lab Coat (SKU: 3176)	59
● Landau Unisex 2-Pocket Full-Length Lab Coat (SKU: 3178)	60
● Landau Unisex 3-Pocket Full-Length Lab Coat	61
● Landau Women's 5-Pocket Consultation Jacket	62
● Landau Women's 3-Pocket Mid-Length Lab Coat	63
● Landau Unisex 4-Pocket Mid-Length Lab Coat	64
● Landau Scrub Zone Unisex 3-Pocket Mid-Length Lab Coat	65
● Landau Women's 3-Pocket Consultation Jacket	66
● Landau Unisex 2-Pocket Full-Length Lab Coat	67
● Landau Proflex Men's 5-Pocket Full-Length Lab Coat	68
● Landau Men's 5-Pocket Full-Length Lab Coat	69
● Landau Men's 3-Pocket Full-Length Lab Coat (SKU: 3132)	70
● Landau Men's 3-Pocket Full-Length Lab Coat (SKU: 3138)	71
● Landau Men's 3-Pocket Full-Length Lab Coat (SKU: 3139)	72
● Landau Men's 3-Pocket Full-Length Lab Coat (SKU: 3140)	73
● Landau Men's 3-Pocket Full-Length Lab Coat (SKU: 3145)	74
● Landau Men's 3-Pocket Mid-Length Lab Coat (SKU: 3148)	75
● Landau Men's 3-Pocket Mid-Length Lab Coat (SKU: 3163)	76
● Landau Men's 5-Pocket Mid-Length Lab Coat (SKU: 3166)	77
● Landau Men's 5-Pocket Mid-Length Notebook Lab Coat (SKU: 3174)	78
● Landau Men's 5-Pocket Consultation Jacket	79



**Colors:**



**Sizes:** [XXS](#) [XSM](#) [SML](#) [MED](#) [LGE](#) [XLG](#) [XXL](#) [3XL](#) [4XL](#) [5XL](#) [1X](#)

[Measurement / Size Chart](#)

[Click for Bulk Order Quote](#)

[Click for Pricing](#)

**Description:**

We design quality medical scrubs and medical uniforms with universal appeal. This V-neck scrub top features a banded neckline and side vents for extra movement and flexibility throughout your work day. Three total pockets provide plenty of storage for all your medical essentials. Our modern fit is tailored to enhance your shape without constricting your movement, and our 2-way comfort stretch helps give you added flexibility required of your work wear. Whether it's Landau scrubs for men or scrubs for women, we're known for producing scrubs that work as hard as you do!

## LANDAU PROFLEX WOMEN'S 3-POCKET V-NECK SCRUB TOP

**SKU:** 4160

**Features:**

- \* Modern Tailored Fit – Tapered to flatter your shape without limiting movement
- \* Fade Resistant
- \* 2-Way Stretch
- \* Shape Retention
- \* 73% Polyester/25% Rayon/2% Spandex
- \* Side vents for ease of movement
- \* 3 Pockets: 1 double patch pocket with accessory loop, 1 single patch pocket with bungee loop
- \* Machine wash cold with similar colors. Do not bleach. Tumble dry low. Cool iron if needed.
- \* Size Medium Length: 25.375"
- \* Size Medium Sleeve Length: 7.625"





**Colors:**



**Sizes:**



## LANDAU PROFLEX WOMEN'S 3-POCKET MOCK WRAP NECK SCRUB TOP

**SKU:** 4161

**Features:**

- \* Modern Tailored Fit - Tapered to flatter your shape without limiting movement
- \* Fade Resistant
- \* 2-Way Stretch
- \* Shape Retention
- \* 73% Polyester/25% Rayon/2% Spandex
- \* Right side mock wrap v-neck scrub top designed for ease of embroidery placement
- \* 3 Pockets: 1 double patch pocket with accessory loop, 1 single patch pocket with bungee loop
- \* Side vents for ease of movement
- \* Princess seams and back darts for feminine shaping
- \* Machine wash cold with similar colors. Do not bleach. Tumble dry low. Cool iron if needed.
- \* Size Medium Length: 25.75"
- \* Size Medium Sleeve Length: 7.875"

[Measurement / Size Chart](#)

[Click for Bulk Order Quote](#)

[Click for Pricing](#)

**Description:**

We design quality medical scrubs and medical uniforms with universal appeal. This mock wrap V-neck scrub top for women has side vents for ease of movement and princess seams and back darts for feminine shaping. Three pockets and accessory loops provide ample storage for your medical essentials. Our modern tailored fit is tapered to enhance your shape without constricting your movement, and our 2-way comfort stretch helps give you added flexibility required of your work wear. Whether it's Landau scrubs for men or scrubs for women, we're known for producing scrubs that work as hard as you do!





**Colors:**



**Sizes:**



[Measurement / Size Chart](#)

[Click for Bulk Order Quote](#)

[Click for Pricing](#)

**Description:**

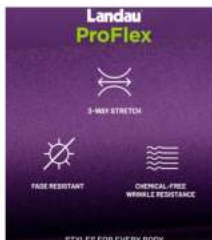
We design quality medical scrubs and medical uniforms with universal appeal. This Landau ProFlex V-neck scrub top for women features knit side panels for ease of movement and a high-low hem for extra coverage when you're bending and reaching. Two pockets and multiple accessory loops provide all the storage you'll need to keep your essentials within easy reach. Our modern tailored fit is tapered to enhance your shape without constricting your movement, and our 2-way comfort stretch helps give you added flexibility required of your work wear. Whether it's Landau scrubs for men or scrubs for women, we're known for producing scrubs that work as hard as you do!

## LANDAU PROFLEX WOMEN'S 2-POCKET V-NECK SCRUB TOP

**SKU:** 4168

**Features:**

- \* Modern Tailored Fit - Tapered to flatter your shape without limiting movement
- \* Fade Resistant
- \* Wrinkle Resistant
- \* 2-Way Stretch
- \* 73% Polyester/25% Rayon/2% Spandex
- \* Knit side panels for extra ease of movement
- \* 2 Pockets: 1 patch pocket with accessory loop and scissors tape, 1 patch pocket with bungee loop
- \* High-low hem for extra coverage when bending and reaching
- \* Shoulder accessory loop
- \* Machine wash cold with similar colors. Do not bleach. Tumble dry low. Cool iron if needed.
- \* Size Medium Length: 27"
- \* Size Medium Sleeve Length: 7.875"



Colors:



Sizes:



## LANDAU PROFLEX WOMEN'S 3-POCKET V-NECK SCRUB TOP

**SKU:** 4172

### Features:

- \* Modern Tailored Fit - Tapered to flatter your shape without limiting movement
- \* Fade Resistant
- \* 2-Way Stretch
- \* Shape Retention
- \* 73% Polyester/25% Rayon/2% Spandex
- \* Knit cuffs stay in place
- \* 3 Pockets: 1 double patch pocket with accessory loop, 1 single patch pocket with bungee loop
- \* Knit arm and back panels for extra ease of movement
- \* Machine wash cold with similar colors. Do not bleach. Tumble dry low. Cool iron if needed.
- \* Size Medium Length: 25.625"
- \* Size Medium Sleeve Length: 26"

[Measurement / Size Chart](#)

[Click for Bulk Order Quote](#)

[Click for Pricing](#)

### Description:

We design quality medical scrubs and medical uniforms with universal appeal. Our crossover V-neck long-sleeve scrub top for women features knit arm and back panels and side vents for extra ease of movement and knit cuffs that stay in place. Three total pockets including one double patch pocket with an accessory loop and one single patch pocket with a bungee loop as well as a shoulder accessory loop offers plenty of storage for your medical essentials. Our modern tailored fit is tapered to enhance your shape without constricting your movement, and our 2-way comfort stretch helps give you added flexibility required of your work wear. Whether it's Landau scrubs for men or scrubs for women, we're known for producing scrubs that work as hard as you do!





**Colors:**



**Sizes:** [XSM](#) [SML](#) [MED](#) [LGE](#) [XLG](#) [XXL](#) [3XL](#) [4XL](#) [5XL](#)

[Measurement / Size Chart](#)

[Click for Bulk Order Quote](#)

[Click for Pricing](#)

**Description:**

We design quality medical scrubs and medical uniforms with universal appeal. Princess seams and back darts add feminine shaping to this women's scrub top while a zipper closure adds style and convenience. With five pockets, you'll never run out of room for your medical essentials. Our modern tailored fit is tapered to enhance your shape without constricting your movement, and our 2-way comfort stretch helps give you added flexibility required of your work wear. Whether it's Landau scrubs for men or scrubs for women, we're known for producing scrubs that work as hard as you do!

## LANDAU PROFLEX WOMEN'S 5-POCKET NOTCH COLLAR SCRUB TOP

**SKU:** 4173PRV

**Features:**

- \* Modern Tailored Fit - Tapered to flatter your shape without limiting movement
- \* Breathable
- \* Fade Resistant
- \* Wrinkle Resistant
- \* 2-Way Stretch
- \* Shape Retention
- \* 73% Polyester/25% Rayon/2% Spandex
- \* Princess seams and back darts for feminine shaping
- \* 5 Pockets: 1 double patch pocket with accessory loop and scissors tape, 1 triple patch pocket
- \* ProFlex signature green detail in back neck, logo tape on wearer's right
- \* Machine wash cold with similar colors. Do not bleach. Tumble dry low. Cool iron if needed.
- \* Size Medium Length: 28"
- \* Size Medium Sleeve Length: 7.625"

## LANDAU PROFLEX WOMEN'S 3-POCKET V-NECK MATERNITY SCRUB TOP

**SKU:** 4399

### Features:

- \* Modern Tailored Fit – Tapered to flatter your shape without limiting movement
- \* Fade Resistant
- \* 2-Way Stretch
- \* Shape Retention
- \* 73% Polyester/25% Rayon/2% Spandex
- \* 1 Single & 1 Double Patch Pocket
- \* Knit side panels for added comfort & flexibility
- \* Logo tape accessory loop
- \* Machine wash cold with similar colors. Do not bleach. Tumble dry low. Cool iron if needed.
- \* Size Medium Length: 29.75"
- \* Size Medium Sleeve Length: 8.125"



### Colors:



### Sizes:



[Measurement / Size Chart](#)

[Click for Bulk Order Quote](#)

[Click for Pricing](#)

### Description:

We design quality medical scrubs and medical uniforms with universal appeal. Our V-neck maternity scrub top for women features knit side panels that will stretch to grow with you and a drawstring empire waist for an adjustable fit. Three pockets including one double patch pocket with an accessory loop and one single patch pocket provide plenty of storage for your medical essentials. Our modern tailored fit is tapered to enhance your shape without constricting your movement, and our 2-way comfort stretch helps give you added flexibility required of your work wear. Whether it's Landau scrubs for men or scrubs for women, we're known for producing scrubs that work as hard as you do!





## LANDAU ESSENTIALS WOMEN'S LONG-SLEEVE TEE

**SKU:** 50001

### Features:

- \* Modern Tailored Fit - Tapered to flatter your shape without limiting movement
- \* Breathable
- \* 4-Way Stretch
- \* Shape Retention
- \* 95% Cotton/5% Spandex
- \* 1" rib knit crew neck tee shirt
- \* Medium Sleeve Length: 23 3/4"
- \* Double needle stitched hem
- \* Machine wash cold with similar colors. Do not bleach. Tumble dry low. Cool iron if needed.
- \* Size Medium Length: 25.75"
- \* Size Medium Sleeve Length: 23.75"

### Colors:



### Sizes:



[Measurement / Size Chart](#)

[Click for Bulk Order Quote](#)

[Click for Pricing](#)

### Description:

Wear this casual classic at work or on the go. A basic long-sleeve crew neck under scrub tee with a one-inch rib knit collar band and double-needle stitched hem meets all your work wear needs. In comfortable jersey knit this Landau Basic Tee is soft, breathable, and easy care. These Heritage Landau medical clothes are so durable they are approved for commercial laundry and are made with our classic generous fit for able ease of movement. 95% Cotton/5% Spandex Medium length: 26 1/2".



**Colors:**



**Sizes:** [XXS](#) [XSM](#) [SML](#) [MED](#) [LGE](#) [XLG](#) [XXL](#) [3XL](#) [4XL](#) [5XL](#)

[Measurement / Size Chart](#)

[Click for Bulk Order Quote](#)

[Click for Pricing](#)

**Description:**

We design quality medical scrubs and medical uniforms with universal appeal. Comfortable and functional, this V-neck scrub top features a generous fit complemented by side vents for extra movement and all-day wearability. A roomy silhouette features three pockets, ensuring your medical essentials are always within easy reach. Whether it's Landau scrubs for men or women, we're known for producing scrubs that work as hard as you do!

## LANDAU SCRUB ZONE WOMEN'S 3-POCKET V-NECK SCRUB TOP

**SKU:** 70221

**Features:**

- \* Classic Relaxed Fit - Generously cut to provide optimal comfort and ease of movement
- \* Breathable
- \* Fade Resistant
- \* 65% Polyester/35% Cotton
- \* V-neck scrub top
- \* 3 Pockets: 2 top patch pockets, 1 accessory pocket on wearer's right
- \* Side vents for ease of movement
- \* Durable enough for commercial laundry
- \* IL Approved
- \* Machine wash cold with similar colors. Do not bleach. Tumble dry low. Cool iron if needed. Highly durable, industrial laundry approved.
- \* Size Medium Length: 26.375"
- \* Size Medium Sleeve Length: 8.75"



## LANDAU SCRUB ZONE WOMEN'S 2-POCKET MOCK WRAP NECK SCRUB TOP

**SKU:** 70228

### Features:

- \* Modern Tailored Fit - Tapered to flatter your shape without limiting movement
- \* Breathable
- \* Fade Resistant
- \* 65% Polyester/35% Cotton
- \* Right side mock wrap v-neck scrub top designed for ease of embroidery placement
- \* 2 Pockets: 2 top-entry pockets
- \* Princess seams for feminine shaping
- \* Side vents for ease of movement
- \* Durable enough for commercial laundry
- \* IL Approved
- \* Machine wash cold with similar colors. Do not bleach. Tumble dry low. Cool iron if needed. Highly durable, industrial laundry approved.
- \* Size Medium Length: 25.75"



### Colors:



**Sizes:** [XXS](#) [XSM](#) [SML](#) [MED](#) [LGE](#) [XLG](#) [XXL](#) [3XL](#) [4XL](#) [5XL](#)

[Measurement / Size Chart](#)

[Click for Bulk Order Quote](#)

[Click for Pricing](#)

### Description:

Stay comfortable throughout the day in this stylish, effortless, highly durable scrub top. Featuring a mock wrap neckline, it's industrial wash approved and priced just right. Side vents enhance breathability for all-day comfort, whether you're walking, bending, or reaching. With a pair of top-entry pockets, this practical scrub top for women will keep everything within easy reach. 65% Polyester/35% Cotton



**Colors:**



**Sizes:**



[Measurement / Size Chart](#)

[Click for Bulk Order Quote](#)

[Click for Pricing](#)

## LANDAU SCRUB ZONE UNISEX 1-POCKET V-NECK SCRUB TOP

**SKU:** 71221

**Features:**

- \* Classic Relaxed Fit – Generously cut to provide optimal comfort and ease of movement
- \* women may want to order one size smaller in this unisex piece
- \* Breathable
- \* Fade Resistant
- \* 65% Polyester/35% Cotton
- \* V-neck unisex scrub top
- \* 1 Chest pocket with pen division
- \* Dolman sleeve for added room
- \* Yoke back
- \* Durable enough for commercial laundry
- \* IL Approved
- \* Machine wash cold with similar colors. Do not bleach. Tumble dry low. Cool iron if needed. Highly durable, industrial laundry approved.
- \* Size Medium Length: 27.5"
- \* Size Medium Sleeve Length: 17.125"

**Description:**

We design quality medical scrubs and medical uniforms with universal appeal. Extremely durable and functional, this breathable fabric unisex scrub top features a movement-friendly fit and flattering dolman sleeves. One chest pocket with pencil division ensures your medical essentials are always within easy reach. Whether it's Landau scrubs for men or scrubs for women, we're known for producing scrubs that work as hard as you do!





**Colors:**



**Sizes:**



## LANDAU ESSENTIALS UNISEX 1-POCKET V-NECK SCRUB TOP

**SKU:** 7502

**Features:**

- \* Classic Relaxed Fit – Generously cut to provide optimal comfort and ease of movement
- \* women may want to order one size smaller in this unisex piece
- \* Breathable
- \* Fade Resistant
- \* 65% Polyester/35% Cotton
- \* V-neck unisex scrub top
- \* 1 Pocket: 1 chest pocket
- \* Dolman sleeve for added room
- \* Reversible
- \* Durable enough for commercial laundry
- \* IL Approved
- \* Machine wash cold with similar colors. Do not bleach. Tumble dry low. Cool iron if needed. Highly durable, industrial laundry approved.
- \* Length: Regular: 27", Tall: 29 1/2"

[Measurement / Size Chart](#)

[Click for Bulk Order Quote](#)

[Click for Pricing](#)

**Description:**

We design quality medical scrubs and medical uniforms with universal appeal. Comfortable and functional, this V-neck scrub top features a generous unisex fit complemented by dolman sleeves for added freedom of movement and all-day wearability. A reversible silhouette features one interior and one exterior breast pocket, ensuring your medical essentials are always within easy reach. Whether it's Landau scrubs for men or scrubs for women, we're known for producing scrubs that work as hard as you do!



**Colors:**



**Sizes:**



[Measurement / Size Chart](#)

[Click for Bulk Order Quote](#)

[Click for Pricing](#)

**Description:**

You'll never know comfort greater than this. The highly durable, banded V-neck scrub top maintains its style and integrity through countless washes-and it's industrial wash approved. On top of your double top-load pocket with interior scissor tape and medical accessory space, there's an extra accessory pocket on the side! With side vents to enhance ventilation and keep you comfortable, this flattering modern-fit top is brushed for added softness.

## LANDAU ESSENTIALS WOMEN'S 4-POCKET V-NECK SCRUB TOP

**SKU:** 8111

**Features:**

- \* Modern Tailored Fit - Tapered to flatter your shape without limiting movement
- \* Breathable
- \* Fade Resistant
- \* 65% Polyester/35% Cotton
- \* V-neck unisex scrub top
- \* 4 Pockets: 2 double patch pockets with instrument division
- \* Durable enough for commercial laundry
- \* Reversible
- \* Durable enough for commercial laundry
- \* IL Approved
- \* Machine wash cold with similar colors. Do not bleach. Tumble dry low. Cool iron if needed. Highly durable, industrial laundry approved.
- \* Size Medium Length: 25.5"



## LANDAU ESSENTIALS WOMEN'S 4-POCKET V-NECK SCRUB TOP

**SKU:** 8219

### Features:

- \* Classic Relaxed Fit - Generously cut to provide optimal comfort and ease of movement
- \* Breathable
- \* Fade Resistant
- \* 65% Polyester/35% Cotton
- \* Crossover v-neck scrub top
- \* 4 Pockets: 2 double patch pockets with instrument division
- \* Side vents for ease of movement
- \* Durable enough for commercial laundry
- \* IL Approved
- \* Machine wash cold with similar colors. Do not bleach. Tumble dry low. Cool iron if needed. Highly durable, industrial laundry approved.
- \* Size Medium Length: Regular: 26 1/8", Tall: 28 1/8"
- \* Size Medium Sleeve Length: Regular: 9 1/4", Tall: 10 1/4"



### Colors:



### Sizes:



[Measurement / Size Chart](#)

[Click for Bulk Order Quote](#)

[Click for Pricing](#)

### Description:

We design quality medical scrubs and medical uniforms with universal appeal. Comfortable and functional, this V-neck scrub top features a generous fit complemented by set-in sleeves for added freedom of movement and all-day wearability. A stylish silhouette features four pockets total, ensuring your medical essentials are always within easy reach. Whether it's Landau scrubs for men or scrubs for women, we're known for producing scrubs that work as hard as you do!

## LANDAU ESSENTIALS WOMEN'S 4-POCKET V-NECK SCRUB TOP

**SKU:** 8232

### Features:

- \* Classic Relaxed Fit - Generously cut to provide optimal comfort and ease of movement
- \* Breathable
- \* Fade Resistant
- \* 65% Polyester/35% Cotton
- \* V-neck snap front scrub top
- \* 4 Pockets: 2 double patch pockets with instrument division
- \* Short Sleeve
- \* Side vents for ease of movement
- \* Durable enough for commercial laundry
- \* IL Approved
- \* Machine wash cold with similar colors. Do not bleach. Tumble dry low. Cool iron if needed. Highly durable, industrial laundry approved.
- \* Size Medium Length: 27.25"
- \* Size Medium Sleeve Length: 8.625"



### Colors:



### Sizes:



[Measurement / Size Chart](#)

[Click for Bulk Order Quote](#)

[Click for Pricing](#)

### Description:

We design quality medical scrubs and medical uniforms with universal appeal. Comfortable and functional, this V-neck scrub top features a generous fit complemented by set-in sleeves for added freedom of movement and all-day wearability. A stylish silhouette features four pockets total including built-in pencil/instrument divisions, ensuring your medical essentials are always within easy reach. Whether it's Landau scrubs for men or scrubs for women, we're known for producing scrubs that work as hard as you do!



## LANDAU ESSENTIALS MEN'S 1-POCKET V-NECK SCRUB TOP

**SKU:** 4098

### Features:

- \* Modern Tailored Fit - Tapered to flatter your shape without limiting movement
- \* Breathable
- \* 2-Way Stretch
- \* Shape Retention
- \* 52% Cotton/45% Polyester/3% Spandex
- \* V neck scrub top
- \* 1 Pocket with an instrument pocket
- \* Front and back shoulder yoke detailing
- \* Side vents for ease of movement
- \* Machine wash cold with similar colors. Do not bleach. Tumble dry low. Cool iron if needed. Highly durable, industrial laundry approved.
- \* Size Medium Length: 30.25"
- \* Size Medium Sleeve Length: 9.875"



### Colors:



### Sizes:



[Measurement / Size Chart](#)

[Click for Bulk Order Quote](#)

[Click for Pricing](#)

### Description:

We design quality medical scrubs and uniforms with universal appeal. Comfortable and functional, this V-neck men's scrub top features a generous fit complemented by short sleeves for added freedom of movement and all-day wearability. A roomy silhouette features one chest pocket with instrument pocket, ensuring your medical essentials are always within easy reach. Whether it's Landau scrubs for men or women, we're known for producing scrubs that work as hard as you do!

## LANDAU PROFLEX MEN'S 4-POCKET V-NECK SCRUB TOP

**SKU:** 4253

### Features:

- \* Modern Tailored Fit - Tapered to flatter your shape without limiting movement
- \* Fade Resistant
- \* 2-Way Stretch
- \* Shape Retention
- \* 73% Polyester/25% Rayon/2% Spandex
- \* Back yoke for a flattering shape
- \* 4 Pockets: 1 chest pocket, 1 double patch pocket with accessory loop, 1 single patch pocket
- \* Side vents for ease of movement
- \* Machine wash cold with similar colors. Do not bleach. Tumble dry low. Cool iron if needed. Highly durable, industrial laundry approved.
- \* Size Medium Length: 28"
- \* Size Medium Sleeve Length: 8.75"



### Colors:



### Sizes:



[Measurement / Size Chart](#)

[Click for Bulk Order Quote](#)

[Click for Pricing](#)

### Description:

We design quality medical scrubs and medical uniforms with universal appeal. Our ProFlex crossover V-neck scrub shirt for men is stylish, comfortable, and functional. Back yoke detailing offers a flattering shape, side vents offer extra ease of movement, and four pockets provide plenty of storage space for your medical accessories. Our modern tailored fit is tapered to enhance your shape without constricting your movement, and our 2-way comfort stretch helps give you added flexibility required of your work wear. Whether it's Landau scrubs for men or scrubs for women, we're known for producing scrubs that work as hard as you do! 73% Polyester/25% Rayon/2% Spandex



## LANDAU PROFLEX MEN'S 2-POCKET V-NECK SCRUB TOP

**SKU:** 4259

### Features:

- \* Modern Tailored Fit - Tapered to flatter your shape without limiting movement
- \* Fade Resistant
- \* 2-Way Stretch
- \* Shape Retention
- \* 73% Polyester/25% Rayon/2% Spandex
- \* Side vents for ease of movement
- \* 2 Pockets: 1 double chest pocket with accessory loop
- \* Machine wash cold with similar colors. Do not bleach. Tumble dry low. Cool iron if needed.
- \* Size Medium Length: 28"
- \* Size Medium Sleeve Length: 8.625"



### Colors:



### Sizes:



[Measurement / Size Chart](#)

[Click for Bulk Order Quote](#)

[Click for Pricing](#)

### Description:

We design quality medical scrubs and medical uniforms with universal appeal. Our crossover V-neck men's scrub top has back yoke detailing for a flattering shape and side vents for extra ease of movement. With one double chest pocket with an accessory loop, this top has simple but practical storage and looks great tucked in or left loose. Our modern tailored fit is tapered to enhance your shape without constricting your movement, and our 2-way comfort stretch helps give you added flexibility required of your work wear. Whether it's Landau scrubs for men or scrubs for women, we're known for producing scrubs that work as hard as you do!

## LANDAU PROFLEX MEN'S 6-POCKET NOTCH COLLAR SCRUB TOP

**SKU:** 4263PRV

### Features:

- \* Modern Tailored Fit - Tapered to flatter your shape without limiting movement
- \* Breathable
- \* Fade Resistant
- \* Wrinkle Resistant
- \* 2-Way Stretch
- \* Shape Retention
- \* 73% Polyester/25% Rayon/2% Spandex
- \* Back yoke for attractive drape
- \* 6 Pockets: 1 chest pocket, 1 double patch pocket with accessory loop and scissors tape, 1 triple patch pocket
- \* ProFlex signature green detail in back neck, logo tape on wearer's right
- \* Machine wash cold with similar colors. Do not bleach. Tumble dry low. Cool iron if needed.
- \* Size Medium Length: 29.5"
- \* Size Medium Sleeve Length: 8.75"



### Colors:



**Sizes:** **SML** MED LGE XLG XXL 3XL 4XL

5XL

[Measurement / Size Chart](#)

[Click for Bulk Order Quote](#)

[Click for Pricing](#)

### Description:

We design quality medical scrubs and medical uniforms with universal appeal. A notched collar and back yoke provide a professional appearance while a zipper closure adds style and convenience to this scrub top. With six pockets, you'll never run out of room for your medical essentials. Our modern tailored fit is tapered to enhance your shape without constricting your movement, and our 2-way comfort stretch helps give you added flexibility required of your work wear. Whether it's Landau scrubs for men or scrubs for women, we're known for producing scrubs that work as hard as you do!



## LANDAU ESSENTIALS MEN'S 5-POCKET V-NECK SCRUB TOP

**SKU:** 7489

### Features:

- \* Classic Relaxed Fit – Generously cut to provide optimal comfort and ease of movement
- \* Breathable
- \* Fade Resistant
- \* 65% Polyester/35% Cotton
- \* V neck scrub top
- \* 5 Pockets: 1 Upper & 2 Lower Patch Pockets With Interior Subdivision for Instruments & Cell Phone
- \* Durable enough for commercial laundry
- \* IL Approved
- \* Locker Loops for Ease to Hang-Up
- \* Machine wash cold with similar colors. Do not bleach. Tumble dry low. Cool iron if needed. Highly durable, industrial laundry approved.
- \* Size Medium Length: Regular: 30", Tall: 32 1/2"
- \* Size Medium Sleeve Length: Regular: 8 3/8", Tall: 9 3/8"



### Colors:



### Sizes:



[Measurement / Size Chart](#)

[Click for Bulk Order Quote](#)

[Click for Pricing](#)

### Description:

If this scrub top had more storage, we'd have to call it a garage! This five pocket top is an easy wear V-neck pullover with one breast pocket, two lower layered pockets on the left and a single pocket with an interior cell phone division on the right. Locker loops make this scrub top easy to hang up after a long shift. These Heritage Landau medical clothes are so durable they are approved for commercial laundry and are made with our classic generous fit for able ease of movement. 65% Polyester/35% Combed Cotton Medium regular length 30".



## LANDAU ESSENTIALS MEN'S 1-POCKET V-NECK SCRUB TOP

**SKU:** 7594

### Features:

- \* Classic Relaxed Fit – Generously cut to provide optimal comfort and ease of movement
- \* Breathable
- \* Fade Resistant
- \* 65% Polyester/35% Cotton
- \* V neck scrub top
- \* 1 Chest Pocket with Pen Division
- \* Back yoke detail
- \* Durable enough for commercial laundry
- \* IL Approved
- \* Set-in sleeve with a 2" vented mesh gusset for extra mobility and cooling air flow
- \* Machine wash cold with similar colors. Do not bleach. Tumble dry low. Cool iron if needed. Highly durable, industrial laundry approved.
- \* Size Medium Length: 29.875"
- \* Size Medium Sleeve Length: 8.5"



### Colors:



### Sizes:



[Measurement / Size Chart](#)

[Click for Bulk Order Quote](#)

[Click for Pricing](#)

### Description:

This V-neck pullover scrub top has one breast pocket with pen division and felled seamed back yoke. Set-in sleeves with a 2" vented mesh gusset. These Heritage Landau medical clothes are so durable they are approved for commercial laundry and are made with our classic generous fit for able ease of movement. 65% Polyester/35% Combed Cotton Medium length: 30".



## LANDAU PROFLEX WOMEN'S BANDED-BOTTOM JOGGER SCRUB PANTS

**SKU:** 2030PRV

### Features:

- \* Modern Tailored Fit - Tapered to flatter your shape without limiting movement
- \* Fade Resistant
- \* Wrinkle Resistant
- \* 2-Way Stretch
- \* 73% Polyester/25% Rayon/2% Spandex
- \* Rib knit waistband and leg cuffs
- \* 7 Pockets: 2 single angled hip pockets, 1 double cargo pocket with accessory loop, 1 single cargo pocket, 2 back pockets
- \* Machine wash cold with similar colors. Do not bleach. Tumble dry low. Cool iron if needed.
- \* Inseam: Regular: 29" Inseam, Petite: 26 1/2" Inseam, Tall: 31" Inseam
- \* Size Medium Leg Opening: 10.375"



### Colors:



### Sizes:



[Measurement / Size Chart](#)

[Click for Bulk Order Quote](#)

[Click for Pricing](#)

### Description:

We design quality scrubs and medical uniforms with universal appeal. These Landau ProFlex mid-rise jogger scrub pants for women feature an elastic waist with an internal drawstring ensuring a snug, custom fit, and seven pockets provide more than enough storage for all your essentials. Our modern tailored fit is tapered to enhance your shape without constricting your movement, and our 2-way comfort stretch helps give you added flexibility required of your work wear. Whether it's Landau scrubs for men or scrubs for women, we're known for producing scrubs that work as hard as you do!



#### Colors:



#### Sizes:



## LANDAU PROFLEX WOMEN'S STRAIGHT-LEG CARGO SCRUB PANTS

**SKU:** 2042

#### Features:

- \* Modern Tailored Fit - Tapered to flatter your shape without limiting movement
- \* Fade Resistant
- \* 2-Way Stretch
- \* 73% Polyester/25% Rayon/2% Spandex
- \* Mid-rise 50/50 drawstring front, elastic back scrub pant
- \* 5 Pockets: 2 angled hip pockets, 1 double cargo pocket with accessory loop, 1 back pocket
- \* Logo tape accessory loop
- \* Machine wash cold with similar colors. Do not bleach. Tumble dry low. Cool iron if needed.
- \* Inseam: Regular: 31 1/4" Inseam, Petite: 28 3/4" Inseam, Tall: 33 1/4" Inseam
- \* Size Medium Leg Opening: 17.75"

[Measurement / Size Chart](#)

[Click for Bulk Order Quote](#)

[Click for Pricing](#)

#### Description:

We design quality medical scrubs and medical uniforms with universal appeal. These Landau ProFlex straight-leg cargo scrub pants come fully loaded with an elastic-back waist and flat front with an internal drawstring for an adjustable fit. Side vents offer added ease of movement. Our modern tailored fit is tapered to enhance your shape without constricting your movement, and our 2-way comfort stretch helps give you added flexibility required of your work wear. Whether it's Landau scrubs for men or scrubs for women, we're known for producing scrubs that work as hard as you do!



## LANDAU PROFLEX WOMEN'S STRAIGHT-LEG YOGA SCRUB PANTS

**SKU:** 2043

### Features:

- \* Modern Tailored Fit – Tapered to flatter your shape without limiting movement
- \* Fade Resistant
- \* 2-Way Stretch
- \* 73% Polyester/25% Rayon/2% Spandex
- \* 4 Pockets: 1 single angled patch pocket, 1 double angled patch pocket with accessory loop, 1 side cargo pocket
- \* Straight leg: 19 1/4" opening
- \* Logo tape accessory loop
- \* Machine wash cold with similar colors. Do not bleach. Tumble dry low. Cool iron if needed.
- \* Inseam: Regular: 31 3/8" Inseam, Petite: 28 7/8" Inseam, Tall: 33 3/8" Inseam
- \* Size Medium Leg Opening: 19.25"



### Colors:



### Sizes:



[Measurement / Size Chart](#)

[Click for Bulk Order Quote](#)

[Click for Pricing](#)

### Description:

We design quality medical scrubs and medical uniforms with universal appeal. Our ProFlex mid-rise yoga waist cargo scrub pants provide a stylish straight leg and side vents for ease of movement, and four pockets provide ample storage for all your medical accessories. Our modern tailored fit is tapered to enhance your shape without constricting your movement, and our 2-way comfort stretch helps give you added flexibility required of your work wear. Whether it's Landau scrubs for men or scrubs for women, we're known for producing scrubs that work as hard as you do!

## LANDAU PROFLEX WOMEN'S TAPERED-LEG CARGO SCRUB PANTS

**SKU:** 2044

### Features:

- \* Modern Tailored Fit – Tapered to flatter your shape without limiting movement
- \* Fade Resistant
- \* Wrinkle Resistant
- \* 2-Way Stretch
- \* 73% Polyester/25% Rayon/2% Spandex
- \* Side vents for extra ease of movement
- \* 5 Pockets: 2 angled hip pockets, 2 cargo pockets, 1 back pocket
- \* Elastic waist with internal drawstring
- \* Machine wash cold with similar colors. Do not bleach. Tumble dry low. Cool iron if needed.
- \* Inseam: Regular: 30 1/2" Inseam, Petite: 28" Inseam, Tall: 32 1/2" Inseam
- \* Size Medium Leg Opening: 14.125"



### Colors:



### Sizes:



[Measurement / Size Chart](#)

[Click for Bulk Order Quote](#)

[Click for Pricing](#)

### Description:

We design quality medical scrubs and medical uniforms with universal appeal. These mid-rise cargo scrub pants for women offer an elastic waist with an internal drawstring, a stylish tapered leg, and side vents for all-day comfort. Five total pockets including two angled hip pockets, two cargo pockets, and one back pocket provide ample storage for all your medical essentials. Our modern tailored fit is tapered to enhance your shape without constricting your movement, and our 2-way comfort stretch helps give you added flexibility required of your work wear. Whether it's Landau scrubs for men or scrubs for women, we're known for producing scrubs that work as hard as you do!



## LANDAU PROFLEX WOMEN'S PWRCOR COMPRESSION WAIST SCRUB PANTS

**SKU:** 2045

### Features:

- \* Modern Tailored Fit – Tapered to flatter your shape without limiting movement
- \* Fade Resistant
- \* 2-Way Stretch
- \* Shape Retention
- \* 73% Polyester/25% Rayon/2% Spandex
- \* 4 Pockets: 1 double cargo pocket with accessory loop, 1 single cargo pocket, 1 back pocket
- \* PWRCor compression waistband with slimming core support that reduces fatigue and won't roll or dig in
- \* Machine wash cold with similar colors. Do not bleach. Tumble dry low. Cool iron if needed.
- \* Machine wash cold with similar colors. Do not bleach. Tumble dry low. Cool iron if needed.
- \* Inseam: Regular: 31" Inseam, Petite: 28 1/2" Inseam, Tall: 33" Inseam
- \* Size Medium Leg Opening: 19.5"



### Colors:



### Sizes:



[Measurement / Size Chart](#)

[Click for Bulk Order Quote](#)

[Click for Pricing](#)

### Description:

We design quality medical scrubs and medical uniforms with universal appeal. These high-rise straight-leg cargo scrub pants feature our PWRCor compression waist that adds slimming core support to reduce fatigue and won't roll or dig in as well as side vents for extra ease of movement. Four total pockets including one double cargo pocket with an accessory loop, one single cargo pocket, and one back pocket offer plenty of storage for your medical essentials. Our modern tailored fit is tapered to enhance your shape without constricting your movement, and our 2-way comfort stretch helps give you added flexibility required of your work wear. Whether it's Landau scrubs for men or scrubs for women, we're known for producing scrubs that work as hard as you do!

## LANDAU PROFLEX UNISEX STRAIGHT-LEG CARGO SCRUB PANTS

**SKU:** 2104

### Features:

- \* Modern Tailored Fit – Tapered to flatter your shape without limiting movement
- \* Breathable
- \* Fade Resistant
- \* Wrinkle Resistant
- \* 2-Way Stretch
- \* Shape Retention
- \* 73% Polyester/25% Rayon/2% Spandex
- \* Side vents for ease of movement
- \* 6 Pockets: 2 hip pockets, 1 back pocket on wearer's right, 1 single cargo pocket, 1 double cargo pocket with accessory loop
- \* ProFlex signature green internal drawstring
- \* Machine wash cold with similar colors. Do not bleach. Tumble dry low. Cool iron if needed.
- \* Inseam: Regular: 30" Inseam, Short: 27 1/2" Inseam, Tall: 32" Inseam
- \* Size Medium Leg Opening: 18.75"



### Colors:



### Sizes:



[Measurement / Size Chart](#)

[Click for Bulk Order Quote](#)

[Click for Pricing](#)

### Description:

We design quality medical scrubs and medical uniforms with universal appeal. An internal drawstring ensures a snug, custom fit, and six pockets provide more than enough storage for all your essentials. A stylish straight leg adds a sleek look while side vents provide ease of movement. Our modern tailored fit is tapered to enhance your shape without constricting your movement, and our 2-way comfort stretch helps give you added flexibility required of your work wear. Whether it's Landau scrubs for men or scrubs for women, we're known for producing scrubs that work as hard as you do!





**Colors:**



**Sizes:**



## LANDAU PROFLEX WOMEN'S BOOTCUT MATERNITY SCRUB PANTS

**SKU:** 2399

**Features:**

- \* Modern Tailored Fit – Tapered to flatter your shape without limiting movement
- \* Fade Resistant
- \* 2-Way Stretch
- \* Shape Retention
- \* 73% Polyester/25% Rayon/2% Spandex
- \* Wide-knit maternity waistband that stretches to grow with you
- \* 3 Pockets: 1 double cargo pocket with accessory loop, 1 single cargo pocket
- \* Bootcut Leg: 20 1/4" opening
- \* Side vents for ease of movement
- \* Machine wash cold with similar colors. Do not bleach. Tumble dry low. Cool iron if needed.
- \* Inseam: 31" Inseam
- \* Size Medium Leg Opening: 20.25"

[Measurement / Size Chart](#)

[Click for Bulk Order Quote](#)

[Click for Pricing](#)

**Description:**

We design quality medical scrubs and medical uniforms with universal appeal. Our high-rise maternity cargo scrub pants offer a wide-knit maternity waistband that stretches to grow with you, a bootcut leg, and side vents for ease of movement. And all your medical essentials can easily be stored in this garment's three pockets, including one double cargo pocket with an accessory loop and one single cargo pocket. Our modern tailored fit is tapered to enhance your shape without constricting your movement, and our 2-way comfort stretch helps give you added flexibility required of your work wear. Whether it's Landau scrubs for men or scrubs for women, we're known for producing scrubs that work as hard as you do!

## LANDAU ESSENTIALS UNISEX STRAIGHT-LEG SCRUB PANTS

**SKU:** 7602

### Features:

- \* Classic Relaxed Fit - Generously cut to provide optimal comfort and ease of movement
- \* women may want to order one size smaller in this unisex piece
- \* Breathable
- \* Fade Resistant
- \* 65% Polyester/35% Cotton
- \* High-rise full drawstring scrub pant
- \* 1 Back Patch Pocket
- \* Straight leg: 18" opening
- \* Reversible
- \* Machine wash cold with similar colors. Do not bleach. Tumble dry low. Cool iron if needed. Highly durable, industrial laundry approved.
- \* Inseam: Regular: 31 3/8" Inseam, Petite: 28 7/8" Inseam, Tall: 33 3/8" Inseam
- \* Leg Opening: 17.25"



### Colors:



### Sizes:



[Measurement / Size Chart](#)

[Click for Bulk Order Quote](#)

[Click for Pricing](#)

### Description:

We design quality medical scrubs and medical uniforms with universal appeal. These medical pants with a breathable fabric are easy to care for and offer a more comfortable fit. Made to fit either scrubs for men or scrubs for women, these pants provide unisex appeal with a sleek, straight-leg cut and are the ideal choice for daily work. A drawstring waistband allows optimal security when it comes to fitting multiple sizes and shapes. Whether it's Landau scrubs for men or scrubs for women, we're known for producing scrubs that work as hard as you do!



## LANDAU ESSENTIALS WOMEN'S TAPERED-LEG SCRUB PANTS

**SKU:** 8320

### Features:

- \* Classic Relaxed Fit - Generously cut to provide optimal comfort and ease of movement
- \* Breathable
- \* Fade Resistant
- \* 65% Polyester/35% Cotton
- \* High-rise full drawstring scrub pant
- \* 2 side pockets
- \* Straight leg: 15 1/8" opening
- \* Relaxed hip & thighs
- \* Durable enough for commercial laundry
- \* IL Approved
- \* Machine wash cold with similar colors. Do not bleach. Tumble dry low. Cool iron if needed. Highly durable, industrial laundry approved.
- \* Inseam: Regular: 31" Inseam, Petite: 28 1/2" Inseam, Tall: 33" Inseam
- \* Leg Opening: 15.625"



### Colors:



### Sizes:



[Measurement / Size Chart](#)

[Click for Bulk Order Quote](#)

[Click for Pricing](#)

### Description:

We design quality medical scrubs and medical uniforms with universal appeal. These medical pants with a breathable fabric are easy to care for and offer a more comfortable fit. These pants provide ample appeal with a sleek, pull-on style and are the ideal choice for daily work. An elastic waistband allows optimal security when it comes to fitting multiple sizes and shapes. Whether it's Landau scrubs for men or scrubs for women, we're known for producing scrubs that work as hard as you do!



**Colors:**



**Sizes:**



## LANDAU SCRUB ZONE WOMEN'S STRAIGHT-LEG CARGO SCRUB PANTS

**SKU:** 83221

**Features:**

- \* Classic Relaxed Fit – Generously cut to provide optimal comfort and ease of movement
- \* Breathable
- \* Fade Resistant
- \* 65% Polyester/35% Cotton
- \* High-rise full drawstring scrub pant
- \* 3 Pockets: 1 single and 1 double patch pocket
- \* Straight leg: 17 1/4" opening
- \* Reinforced seams for extra strength
- \* Durable enough for commercial laundry
- \* IL Approved
- \* Machine wash cold with similar colors. Do not bleach. Tumble dry low. Cool iron if needed. Highly durable, industrial laundry approved.
- \* Inseam: Regular: 31" Inseam, Petite: 28 1/2" Inseam, Tall: 33" Inseam
- \* Leg Opening: 17.625"

[Measurement / Size Chart](#)

[Click for Bulk Order Quote](#)

[Click for Pricing](#)

**Description:**

We design quality medical scrubs and uniforms with universal appeal. These medical pants with a breathable fabric are easy to care for and offer a more comfortable fit. These pants provide appeal with a sleek, straight-leg cut and are the ideal choice for daily work. A drawstring waistband allows optimal security when it comes to fitting multiple sizes and shapes. Whether it's Landau scrubs for men or women, we're known for producing scrubs that work as hard as you do!





**Colors:**



**Sizes:**



## LANDAU SCRUB ZONE WOMEN'S STRAIGHT-LEG CARGO SCRUB PANTS

**SKU:** 83223

**Features:**

- \* Modern Tailored Fit - Tapered to flatter your shape without limiting movement
- \* Breathable
- \* Fade Resistant
- \* 65% Polyester/35% Cotton
- \* Mid-rise, 50/50 flat front, elastic back cargo scrub pants
- \* 5 Pockets
- \* 2 hip pockets, 2 cargo pockets, 1 back pocket
- \* Straight leg: 17 1/8" opening
- \* Internal drawstring for flat front provides adjustability without bulk
- \* Durable enough for commercial laundry
- \* IL Approved
- \* Machine wash cold with similar colors. Do not bleach. Tumble dry low. Cool iron if needed. Highly durable, industrial laundry approved.
- \* Inseam: Regular: 31 1/2" Inseam, Petite: 29" Inseam, Tall: 33 1/2" Inseam
- \* Size Medium Leg Opening: 17.125"

[Measurement / Size Chart](#)

[Click for Bulk Order Quote](#)

[Click for Pricing](#)

**Description:**

A great pair of cargo scrub pants like these can see you through any busy day. Featuring durable fabrication, they're both industrial wash approved and easy on your wallet! The modern tailors fit is both flattering and functional. They feature a pair of spacious, angled hip pockets, plus two cargo pockets and a back pocket to ensure enough room for all your medical accessories. 65% Polyester/35% Cotton



**Colors:**



**Sizes:**



## LANDAU ESSENTIALS WOMEN'S STRAIGHT-LEG SCRUB PANTS

**SKU:** 8327

**Features:**

- \* Classic Relaxed Fit - Generously cut to provide optimal comfort and ease of movement
- \* Breathable
- \* Fade Resistant
- \* 65% Polyester/35% Cotton
- \* High-rise elastic waist scrub pant
- \* 2 Pockets: 2 side pockets
- \* Straight leg: 17 1/4" opening
- \* Relaxed hip & thighs
- \* Durable enough for commercial laundry
- \* IL Approved
- \* Machine wash cold with similar colors. Do not bleach. Tumble dry low. Cool iron if needed. Highly durable, industrial laundry approved.
- \* Inseam: Regular: 31" Inseam, Petite: 28 1/2" Inseam, Tall: 33" Inseam
- \* Leg Opening: 17.625"

[Measurement / Size Chart](#)

[Click for Bulk Order Quote](#)

[Click for Pricing](#)

**Description:**

We design quality medical scrubs and medical uniforms with universal appeal. These medical pants with a breathable fabric are easy to care for and offer a more comfortable fit. These pants provide ample appeal with a sleek, straight-leg cut and are the ideal choice for daily work. An elastic waistband allows optimal security when it comes to fitting multiple sizes and shapes. Whether it's Landau scrubs for men or scrubs for women, we're known for producing scrubs that work as hard as you do!



## LANDAU ESSENTIALS WOMEN'S FLARE-LEG SCRUB PANTS

**SKU:** 8335

### Features:

- \* Classic Relaxed Fit - Generously cut to provide optimal comfort and ease of movement
- \* Breathable
- \* Fade Resistant
- \* 65% Polyester/35% Cotton
- \* Mid-rise 50/50 drawstring front, elastic back scrub pants
- \* 2 In-seam side pockets
- \* Flare leg: 22 1/4" opening
- \* Relaxed hip & thighs
- \* Durable enough for commercial laundry
- \* IL Approved
- \* Machine wash cold with similar colors. Do not bleach. Tumble dry low. Cool iron if needed. Highly durable, industrial laundry approved.
- \* Inseam: Regular: 31" Inseam, Petite: 28 1/2" Inseam, Tall: 33" Inseam
- \* Leg Opening: 21.875"



### Colors:



### Sizes:



[Measurement / Size Chart](#)

[Click for Bulk Order Quote](#)

[Click for Pricing](#)

### Description:

We design quality medical scrubs and uniforms with universal appeal. Slip on this pair of breathable fabric scrub pants to discover your perfect fit. Added room along the hips and thighs allows for free and easy movement, while adding all-day wearability. The durable fabric material withstands repeated washings and long work weeks. Whether it's Landau scrubs for men or women, we're known for producing scrubs that work as hard as you do!



**Colors:**



**Sizes:**



## LANDAU ESSENTIALS WOMEN'S STRAIGHT-LEG CARGO SCRUB PANTS

**SKU:** 8380

**Features:**

- \* Classic Relaxed Fit - Generously cut to provide optimal comfort and ease of movement
- \* Breathable
- \* Fade Resistant
- \* 65% Polyester/35% Cotton
- \* Mid-rise 50/50 drawstring front, elastic back scrub pants
- \* 9 Pockets
- \* Straight Leg: 17 1/8" opening
- \* Durable enough for commercial laundry
- \* IL Approved
- \* Machine wash cold with similar colors. Do not bleach. Tumble dry low. Cool iron if needed. Highly durable, industrial laundry approved.
- \* Inseam: Regular: 31 1/2" Inseam, Petite: 29" Inseam, Tall: 33 1/2" Inseam
- \* Leg Opening: 17.125"

[Measurement / Size Chart](#)

[Click for Bulk Order Quote](#)

[Click for Pricing](#)

**Description:**

When comfort is your goal, look no further than these timeless cargo scrub pants. Designed with an elastic at the back waist and a drawstring at the front for the best possible fit. With a pair of hip pockets, accessory pockets, a back pocket, and an instrument division, it's easier than ever to keep your essentials handy. The modern fit straight leg scrub pant for women lends your professional wardrobe a fresh update. Bonus: Not only is it industrial wash approved, but it's also brushed for extreme softness.





**Colors:**



**Sizes:**



## LANDAU ESSENTIALS WOMEN'S STRAIGHT-LEG CARGO SCRUB PANTS

**SKU:** 8385

**Features:**

- \* Classic Relaxed Fit - Generously cut to provide optimal comfort and ease of movement
- \* Breathable
- \* Fade Resistant
- \* 65% Polyester/35% Cotton
- \* Mid-rise 50/50 drawstring front, elastic back scrub pants
- \* 5 Pockets: 2 in-seam side, 1 back, and 2 cargo pockets
- \* Straight Leg: 19 1/2" opening
- \* Center seam & side vents
- \* Durable enough for commercial laundry
- \* IL Approved
- \* Machine wash cold with similar colors. Do not bleach. Tumble dry low. Cool iron if needed. Highly durable, industrial laundry approved.
- \* Inseam: Regular: 31 1/2" Inseam, Petite: 29" Inseam, Tall: 33 1/2" Inseam
- \* Leg Opening: 19.25"

[Measurement / Size Chart](#)

[Click for Bulk Order Quote](#)

[Click for Pricing](#)

**Description:**

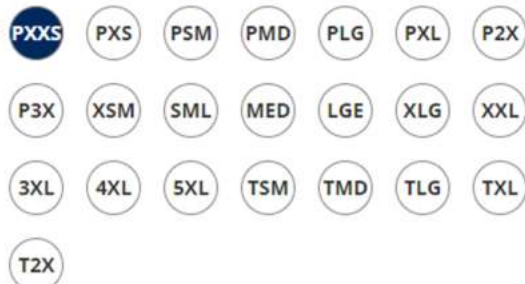
Need scrub pants built for comfort and function? Our Landau scrub pant combines elastic back with drawstring-front waist. Contoured through hips. The deep side waist and cargo pockets can hold all your medical accessories. These durable scrub pants have a low rise, straight leg, relaxed hip and thigh for easy comfort. It sport a center seams and side vents for ease of motion. These Heritage Landau medical clothes are so durable they are approved for commercial laundry and are made with our classic generous fit for added comfort. XS-2XL (31" inseam) PXS-P2X (29 1/2" inseam) TXS-T2X (33" inseam).



**Colors:**



**Sizes:**



## LANDAU SCRUB ZONE UNISEX STRAIGHT-LEG CARGO SCRUB PANTS

**SKU:** 85221

**Features:**

- \* Classic Relaxed Fit – Generously cut to provide optimal comfort and ease of movement
- \* women may want to order one size smaller in this unisex piece
- \* Breathable
- \* Fade Resistant
- \* 65% Polyester/35% Cotton
- \* High-rise, soft-webbed full drawstring scrub pant
- \* 2 Pockets: 1 back pocket, 1 side pocket
- \* Straight leg: 17 3/4" opening
- \* Reinforced seams for extra strength
- \* Durable enough for commercial laundry
- \* IL Approved
- \* Machine wash cold with similar colors. Do not bleach. Tumble dry low. Cool iron if needed. Highly durable, industrial laundry approved.
- \* Inseam: Regular: 31" Inseam, Petite: 28 1/2" Inseam, Tall: 33" Inseam
- \* Leg Opening: 17.5"

[Measurement / Size Chart](#)

[Click for Bulk Order Quote](#)

[Click for Pricing](#)

**Description:**

We design quality medical scrubs and medical uniforms with universal appeal. Slip on this pair of breathable fabric scrub pants to discover your perfect fit. Added room along the hips and thighs allows for free-and-easy movement, while adding all-day wearability. A durable fabric material withstands repeated washings and long work weeks. Whether it's Landau scrubs for men or scrubs for women, we're known for producing scrubs that work as hard as you do!





**Colors:**



**Sizes:**



## LANDAU ESSENTIALS MEN'S STRAIGHT-LEG CARGO SCRUB PANTS

**SKU:** 2012

**Features:**

- \* Modern Tailored Fit – Tapered to flatter your shape without limiting movement
- \* Breathable
- \* Fade Resistant
- \* 53% Cotton/44% Polyester/3% Spandex
- \* 5 Pockets: Button closure on back pocket
- \* Elastic waist mid-rise scrub pant with internal drawstring for adjustability
- \* Zipper fly front
- \* Machine wash cold with similar colors. Do not bleach. Tumble dry low. Cool iron if needed.
- \* Inseam: Regular: 31 1/2" Inseam, Short: 29" Inseam, Tall: 34" Inseam
- \* Leg Opening: 18"

[Measurement / Size Chart](#)

[Click for Bulk Order Quote](#)

[Click for Pricing](#)

**Description:**

We design quality medical scrubs and uniforms with universal appeal. These men's medical pants with a breathable fabric are easy to care for and offer a more comfortable fit. These pants provide appeal with a sleek, straight-leg cut, and five pockets are the ideal choice for daily work. A drawstring waistband allows optimal security when it comes to fitting multiple sizes and shapes. Whether it's Landau scrubs for men or women, we're known for producing scrubs that work as hard as you do!



**Colors:**



**Sizes:**



## LANDAU ESSENTIALS MEN'S STRAIGHT-LEG CARGO SCRUB PANTS

**SKU:** 2037

**Features:**

- \* Classic Relaxed Fit – Generously cut to provide optimal comfort and ease of movement
- \* Moisture Wicking
- \* Fade Resistant
- \* Shape Retention
- \* 95% Polyester/5% Spandex
- \* 50/50 flat front/ elastic back high-rise cargo scrub pant
- \* 4 Pockets: 2 side angle hip pockets, 1 cargo, 1 back pocket
- \* Straight leg: 18 1/2" opening
- \* Zipper fly front
- \* Machine wash cold with similar colors. Do not bleach. Tumble dry low. Cool iron if needed.
- \* Inseam: Regular: 31 1/2" Inseam, Short: 29 1/2" Inseam, Tall: 34" Inseam
- \* Leg Opening: 18.5"

[Measurement / Size Chart](#)

[Click for Bulk Order Quote](#)

[Click for Pricing](#)

**Description:**

Versatile and comfortable, our drawstring cargo scrub pants are made with 4 way stretch fabric for movement and plenty of pocket storage. Two hip pockets with self-fabric inset detail, cargo pocket with a separate instrument pocket and an additional back pocket give you space to store all your medical accessories. Snap waistband includes internal drawstring with silicone stripe for an extra secure tie, elastic back waist as well as functional belt loops and fully functional fly scrub pants for men. This Heritage Landau medical clothes are so durable they are approved for commercial laundry and are made with our classic generous fit for able ease of movement. 95% polyester/5% Spandex.





**Colors:**



**Sizes:**



## LANDAU PROFLEX MEN'S BANDED-BOTTOM JOGGER SCRUB PANTS

**SKU:** 2100PRV

**Features:**

- \* Modern Tailored Fit – Tapered to flatter your shape without limiting movement
- \* Fade Resistant
- \* Wrinkle Resistant
- \* 2-Way Stretch
- \* 73% Polyester/25% Rayon/2% Spandex
- \* Jogger
- \* 7 Pockets: 2 single angled hip pockets, 1 double cargo pocket with accessory loop, 1 single cargo pocket, 2 back pockets
- \* Rib knit waistband and leg cuffs, drawstring, logo'd tab
- \* Machine wash cold with similar colors. Do not bleach. Tumble dry low. Cool iron if needed.
- \* Inseam: Regular: 30" Inseam, Short: 27 1/2" Inseam, Tall: 32" Inseam
- \* Size Medium Leg Opening: 9.75"

[Measurement / Size Chart](#)

[Click for Bulk Order Quote](#)

[Click for Pricing](#)

**Description:**

We design quality scrubs and medical uniforms with universal appeal. These Landau ProFlex mid-rise jogger scrub pants for men feature an elastic waist with drawstring that ensures a snug, custom fit, and seven pockets provide more than enough storage for all of your essentials. Our modern tailored fit is tapered to enhance your shape without constricting your movement, and our 2-way comfort stretch helps give you added flexibility required of your work wear. Whether it's Landau scrubs for men or scrubs for women, we're known for producing scrubs that work as hard as you do!



## LANDAU PROFLEX MEN'S STRAIGHT-LEG CARGO SCRUB PANTS

**SKU:** 2103

### Features:

- \* Modern Tailored Fit – Tapered to flatter your shape without limiting movement
- \* Fade Resistant
- \* 2-Way Stretch
- \* Shape Retention
- \* 73% Polyester/25% Rayon/2% Spandex
- \* Mid-rise 50/50 flat front, elastic back cargo scrub pant with belt loops
- \* 6 Pockets: 2 single angled patch pockets, 1 triple cargo pocket, 1 back pocket
- \* Straight leg: 18" opening
- \* Internal drawstring adjustability while providing a flat appearance
- \* Machine wash cold with similar colors. Do not bleach. Tumble dry low. Cool iron if needed.
- \* Inseam: Regular: 31 1/2" Inseam, Short: 29" Inseam, Tall: 33 1/2" Inseam
- \* Size Medium Leg Opening: 17.75"

### Colors:



### Sizes:



[Measurement / Size Chart](#)

[Click for Bulk Order Quote](#)

[Click for Pricing](#)

### Description:

We design quality medical scrubs and medical uniforms with universal appeal. These Landau ProFlex cargo scrub pants come fully loaded with an elastic-back waist and flat front with a zipper and snap closure as well as belt loops and an internal drawstring for an adjustable fit. Six pockets offer plenty of storage space for all your medical accessories. Our men's modern tailored fit is tapered to enhance your shape without constricting your movement, and our 2-way comfort stretch helps give you added flexibility required of your work wear. Whether it's Landau scrubs for men or scrubs for women, we're known for producing scrubs that work as hard as you do! 73% Polyester/25% Rayon/2% Spandex.





## LANDAU ESSENTIALS MEN'S STRAIGHT-LEG SCRUB PANTS

**SKU:** 8550

### Features:

- \* Classic Relaxed Fit – Generously cut to provide optimal comfort and ease of movement
- \* Breathable
- \* Fade Resistant
- \* 65% Polyester/35% Cotton
- \* Full elastic waist pant with internal drawstring
- \* 3 Pockets: 2 slant pockets, 1 button-closure back pocket
- \* Straight leg 18" opening
- \* High rise waist
- \* Zipper fly front
- \* Machine wash cold with similar colors. Do not bleach. Tumble dry low. Cool iron if needed. Highly durable, industrial laundry approved.
- \* Inseam: Regular: 31" Inseam, Short: 28 1/2" Inseam, Tall: 33" Inseam
- \* Leg Opening: 18"

### Colors:



**Sizes:** [SML](#) [MED](#) [LGE](#)

[Measurement / Size Chart](#)

[Click for Bulk Order Quote](#)

[Click for Pricing](#)

### Description:

We design quality medical scrubs and uniforms with universal appeal. These pants with a breathable fabric are easy to care for and offer a more comfortable fit. They provide appeal with a sleek, straight-leg cut for a comfortable, fitted look all day long. The drawstring waistband allows optimal security when it comes to fitting multiple sizes and shapes. Whether it's Landau scrubs for men or women, we're known for producing scrubs that work as hard as you do!



**Colors:**



**Sizes:**



## LANDAU ESSENTIALS MEN'S STRAIGHT-LEG CARGO SCRUB PANTS

**SKU:** 8555

**Features:**

- \* Classic Relaxed Fit – Generously cut to provide optimal comfort and ease of movement
- \* Breathable
- \* Fade Resistant
- \* 65% Polyester/35% Cotton
- \* High rise full elastic waist scrub pant
- \* 7 Pockets: 2 side inseam, 1 back patch pocket, & 2 front cargo pockets with interior subdivision for instruments & cell phone
- \* Straight leg 18" opening
- \* High rise waist with Internal drawstring for adjustability while providing a flat front appearance
- \* Zipper fly front
- \* Machine wash cold with similar colors. Do not bleach. Tumble dry low. Cool iron if needed.
- \* Highly durable, industrial laundry approved.
- \* Inseam: Regular: 31" Inseam, Short: 28 1/2" Inseam, Tall: 33" Inseam
- \* Leg Opening: 17.75"

[Measurement / Size Chart](#)

[Click for Bulk Order Quote](#)

[Click for Pricing](#)

**Description:**

We design quality medical scrubs and medical uniforms with universal appeal. These medical pants with a breathable fabric are easy to care for and offer a more comfortable fit. These pants provide ample appeal with a sleek, straight-leg cut and are the ideal choice for daily work. An elastic waistband with internal drawstring allows optimal security when it comes to fitting multiple sizes and shapes. Whether it's Landau scrubs for men or scrubs for women, we're known for producing scrubs that work as hard as you do!



## LANDAU PROFLEX WOMEN'S WARM-UP SCRUB JACKET

**SKU:** 3038

### Features:

- \* Modern Tailored Fit – Tapered to flatter your shape without limiting movement
- \* Fade Resistant
- \* 2-Way Stretch
- \* Shape Retention
- \* 73% Polyester/25% Rayon/2% Spandex
- \* Side vents for ease of movement
- \* 3 Pockets: 1 double patch pocket with accessory loop, 1 single patch pocket
- \* Knit cuff sleeves stay in place
- \* Machine wash cold with similar colors. Do not bleach. Tumble dry low. Cool iron if needed.
- \* Size Medium Length: 29.5"
- \* Size Medium Sleeve Length: 24"



### Colors:



### Sizes:



[Measurement / Size Chart](#)

[Click for Bulk Order Quote](#)

[Click for Pricing](#)

### Description:

We design quality medical scrubs and medical uniforms with universal appeal. Getting ready is a snap in this Landau Proflex crew-neck warm-up scrub jacket with beautiful back yoke detailing and a feminine cut for that crucial touch of style. Our modern tailored fit is tapered to enhance your shape without constricting your movement, and our 2-way comfort stretch helps give you added flexibility required of your work wear. Whether it's Landau scrubs for men or scrubs for women, we're known for producing scrubs that work as hard as you do! 73% Polyester/25% Rayon/2% Spandex.



**Colors:**



**Sizes:**



## LANDAU SCRUB ZONE WOMEN'S WARM-UP SCRUB JACKET

**SKU:** 70227

**Features:**

- \* Classic Relaxed Fit – Generously cut to provide optimal comfort and ease of movement
- \* Breathable
- \* Fade Resistant
- \* 65% Polyester/35% Cotton
- \* Snap front jewel neck scrub jacket
- \* 3 Pockets: 2 top entry pockets, 1 instrument pocket
- \* Sleeve Length: 25 1/4"
- \* Knit cuff keeps sleeves where you want them
- \* Durable enough for commercial laundry
- \* IL Approved
- \* Machine wash cold with similar colors. Do not bleach. Tumble dry low. Cool iron if needed. Highly durable, industrial laundry approved.
- \* Size Medium Length: 27.875"
- \* Size Medium Sleeve Length: 25.25"

[Measurement / Size Chart](#)

[Click for Bulk Order Quote](#)

[Click for Pricing](#)

**Description:**

Need a professional layering piece? This scrub jacket has a simple, snap-front closure that makes it easy to throw on and quickly remove as needed. Perfect for work or when you need a warming layer during your breaks. It's highly durable, industrial wash approved, and won't break the bank. The knit cuffs lock in place so that you won't worry about falling sleeves. Includes a pair of entry pockets, plus interior scissor tape and instrument pockets. Our classic fit is generous scrubs for ample ease of motion. 65% Polyester/35% Cotton





**Colors:**



**Sizes:**



## LANDAU SCRUB ZONE WOMEN'S WARM-UP SCRUB JACKET

**SKU:** 75221

**Features:**

- \* Classic Relaxed Fit – Generously cut to provide optimal comfort and ease of movement
- \* Breathable
- \* Fade Resistant
- \* 65% Polyester/35% Cotton
- \* Jewel neck snap front scrub jacket
- \* 3 Pockets: Two large, top-loading patch pockets. Hidden accessory tape and cell phone division inside right pocket.
- \* Medium sleeve length 25 1/4"
- \* Covered elastic cuffs
- \* Durable enough for commercial laundry
- \* IL Approved
- \* Machine wash cold with similar colors. Do not bleach. Tumble dry low. Cool iron if needed. Highly durable, industrial laundry approved.
- \* Size Medium Length: 27.75"
- \* Size Medium Sleeve Length: 25.125"

[Measurement / Size Chart](#)

[Click for Bulk Order Quote](#)

[Click for Pricing](#)

**Description:**

We design quality medical scrubs and medical uniforms with universal appeal. Comfortable and functional, this fabric scrub jacket for women features a movement-friendly fit and snap-front silhouette made for effortless ensemble changes. Two top-loading patch pockets, including one cell phone pocket division, ensure your medical essentials are always within easy reach. Whether it's Landau scrubs for men or scrubs for women, we're known for producing scrubs that work as hard as you do!

## LANDAU SCRUB ZONE UNISEX WARM-UP SCRUB JACKET

**SKU:** 75231

### Features:

- \* Classic Relaxed Fit – Generously cut to provide optimal comfort and ease of movement
- \* women may want to order one size smaller in this unisex piece
- \* Breathable
- \* Fade Resistant
- \* 65% Polyester/35% Cotton
- \* Snap front crew neck scrub jacket
- \* 3 Pockets: Two top patch pockets. Right pocket has an additional accessory pocket.
- \* Medium sleeve length 27 1/4"
- \* Knit cuff
- \* Durable enough for commercial laundry
- \* IL Approved
- \* Machine wash cold with similar colors. Do not bleach. Tumble dry low. Cool iron if needed. Highly durable, industrial laundry approved.
- \* Size Medium Length: 28"
- \* Size Medium Sleeve Length: 27.25"



### Colors:



### Sizes:



[Measurement / Size Chart](#)

[Click for Bulk Order Quote](#)

[Click for Pricing](#)

### Description:

Durability and value, a winning combination. ScrubZone Landau scrubs are built so tough they pass commercial laundry standards for durability. Our classic fit is generous with ample room for ease of motion. This snap front unisex warm-up scrub jacket features 3 pockets: two top patch pockets. right pocket has an additional divider for your medical accessories. Knit cuffs provide an additional barrier from fluid required in many medical uniforms.



## LANDAU ESSENTIALS WOMEN'S WARM-UP SCRUB JACKET

**SKU:** 7525

### Features:

- \* Classic Relaxed Fit – Generously cut to provide optimal comfort and ease of movement
- \* Breathable
- \* Fade Resistant
- \* 65% Polyester/35% Cotton
- \* Crew neck snap front warm-up scrub jacket
- \* 4 Pockets: 2 double patch pockets with instrument division
- \* Knit cuff keeps sleeves where you want them. Sleeve Length: 27 3/4"
- \* Lots of storage space
- \* Durable enough for commercial laundry
- \* IL Approved
- \* Machine wash cold with similar colors. Do not bleach. Tumble dry low. Cool iron if needed. Highly durable, industrial laundry approved.
- \* Size Medium Length: 28.375"
- \* Size Medium Sleeve Length: 27.375"



### Colors:



### Sizes:



[Measurement / Size Chart](#)

[Click for Bulk Order Quote](#)

[Click for Pricing](#)

### Description:

We design quality medical scrubs and medical uniforms with universal appeal. Comfortable and functional, this fabric scrub jacket for women features a movement-friendly fit and snap-front silhouette made for effortless ensemble changes. Four spacious pockets including one cell phone pocket and built-in pencil/instrument divisions, ensure your medical essentials are always within easy reach. Whether it's Landau scrubs for men or scrubs for women, we're known for producing scrubs that work as hard as you do!

## LANDAU ESSENTIALS WOMEN'S WARM-UP SCRUB JACKET

**SKU:** 7535

### Features:

- \* Classic Relaxed Fit - Generously cut to provide optimal comfort and ease of movement
- \* Breathable
- \* Fade Resistant
- \* 65% Polyester/35% Cotton
- \* 5 Pockets: 1 inside lower patch pocket on the wearer's left, 2 front patch pockets each with an outer cell phone pocket
- \* Durable enough for commercial laundry
- \* IL Approved
- \* Medium Sleeve Length: 27"
- \* Knit cuff keeps sleeves where you want them
- \* Machine wash cold with similar colors. Do not bleach. Tumble dry low. Cool iron if needed. Highly durable, industrial laundry approved.
- \* Size Medium Length: 29.5"
- \* Size Medium Sleeve Length: 27"



### Colors:



### Sizes:



[Measurement / Size Chart](#)

[Click for Bulk Order Quote](#)

[Click for Pricing](#)

### Description:

Chase off the chill with this long-sleeve cardigan-style three-button scrub jacket. With five pockets, including two cell phone pockets and one inside pocket, carrying your essentials is easier than ever. Knit cuffs keep your sleeves in place, and our relaxed fit provides a generous cut to provide optimal comfort and ease of movement. 65% Polyester/35% Combed Cotton. Medium Length: 29 1/2".



## LANDAU PROFLEX MEN'S WARM-UP SCRUB JACKET

**SKU:** 3170

### Features:

- \* Modern Tailored Fit – Tapered to flatter your shape without limiting movement
- \* Fade Resistant
- \* 2-Way Stretch
- \* Shape Retention
- \* 73% Polyester/25% Rayon/2% Spandex
- \* 3 Pockets: 1 double patch pocket with accessory loop, 1 single patch pocket
- \* Snap-front closure
- \* Knit cuffs stay in place
- \* Back yoke for a flattering shape
- \* Machine wash cold with similar colors. Do not bleach. Tumble dry low. Cool iron if needed.
- \* Size Medium Length: 31.375"
- \* Size Medium Sleeve Length: 26.625"



### Colors:



**Sizes:** **SML** **MED** **LGE** **XLG** **XXL** **3XL** **4XL**  
**5XL**

[Measurement / Size Chart](#)

[Click for Bulk Order Quote](#)

[Click for Pricing](#)

### Description:

We design quality medical scrubs and medical uniforms with universal appeal. Stay snug, warm and ready for anything in this men's snap-front warm-up scrub jacket with a knit collar and knit cuffs that stay in place as well as back yoke detailing for a flattering shape. This scrub jacket features three total pockets, including one double patch pocket with an accessory loop and one single patch pocket for plenty of storage for your medical essentials. Our modern tailored fit is tapered to enhance your shape without constricting your movement, and our 2-way comfort stretch helps give you added flexibility required of your work wear. Whether it's Landau scrubs for men or scrubs for women, we're known for producing scrubs that work as hard as you do!

## LANDAU ESSENTIALS MEN'S WARM-UP SCRUB JACKET

**SKU:** 7551

### Features:

- \* Classic Relaxed Fit - Generously cut to provide optimal comfort and ease of movement
- \* Breathable
- \* Fade Resistant
- \* 65% Polyester/35% Cotton
- \* 5 Pockets: 1 inside chest pocket on the wearer's left, 2 front patch pockets, 1 outer cell phone pocket
- \* Sleeve Length: 28 1/4"
- \* Back neck locker loop
- \* Knit cuffs keeps sleeves where you want them
- \* Machine wash cold with similar colors. Do not bleach. Tumble dry low. Cool iron if needed.
- \* Size Medium Length: Regular: 31 1/2", Tall: 33 1/2"
- \* Size Medium Sleeve Length: Regular: 28 1/4", Tall: 29 1/4"



### Colors:



**Sizes:** **SML** MED LGE XLG XXL 3XL 4XL

5XL

[Measurement / Size Chart](#)

[Click for Bulk Order Quote](#)

[Click for Pricing](#)

### Description:

We design quality medical scrubs and medical uniforms with universal appeal. Comfortable and functional, this fabric scrub jacket for men features a movement-friendly fit and snap-front silhouette made for effortless ensemble changes. Five spacious pockets, including one cell phone pocket and built-in pencil/instrument divisions, ensure your medical essentials are always within easy reach. Whether it's Landau scrubs for men or scrubs for women, we're known for producing scrubs that work as hard as you do!



## LANDAU WOMEN'S 2-POCKET CONSULTATION JACKET

**SKU:** 3028

**Features:**

- \* Modern Tailored Fit - Tapered to flatter your shape without limiting movement
- \* Breathable
- \* Fade Resistant
- \* 2-Way Stretch
- \* Shape Retention
- \* 52% Cotton/45% Polyester/3% Spandex
- \* Wing collar consultation jacket for women
- \* 2 front slant pockets
- \* 2-way stretch
- \* Full set-In waist band with princess seams
- \* Five button closure
- \* Wash before wearing. Colors may transfer or fade. Machine wash warm water. Do not use chlorine bleach. Tumble dry medium heat. Iron low heat.
- \* Size Medium Length: 30.375"
- \* Size Medium Sleeve Length: 23.25"



**Colors:**



**Sizes:**  

[Measurement / Size Chart](#)

[Click for Bulk Order Quote](#)

[Click for Pricing](#)

**Description:**

This Landau lab coat provides durable stretch and comfort. It features two front slant pockets, wing lapel, and front placket with five-button closure. This consultation coat is complete with edged stitched princess seams and multi-stitched waistband. 52% Cotton/45% Polyester/3% Spandex. Medium Length: 31 ½".

## Landau Proflex Women's 2-Pocket Mid-Length Lab Coat

**SKU:** 3039

### Features:

- \* Modern Tailored Fit - Tapered to flatter your shape without limiting movement
- \* Moisture Wicking
- \* Fade Resistant
- \* 2-Way Stretch
- \* Shape Retention
- \* 4.89 oz 95% Polyester/5% Spandex Plain Weave
- \* Notch collar 2-way zipper front lab coat
- \* 2 Roomy curved pockets with 1 additional instrument pocket
- \* Princess seams with inset adjustable belt
- \* Double needle topstitch throughout
- \* Pen loop Inside right pocket
- \* Wash before wearing. Machine wash cold. Do not bleach. Tumble dry low heat. Remove promptly. Iron low heat.
- \* Size Medium Length: 31.5"
- \* Size Medium Sleeve Length: 24"



### Colors:



**Sizes:** [XSM](#) [SML](#) [MED](#) [LGE](#) [XLG](#) [XXL](#) [3XL](#)

[Measurement / Size Chart](#)

[Click for Bulk Order Quote](#)

[Click for Pricing](#)

### Description:

We design quality medical scrubs and medical uniforms with universal appeal. Our mid-length lab coat features a two-way front zipper, princess seams for feminine shaping, and an inset adjustable belt for a custom, polished fit. Three total pockets including two curved patch pockets and one instrument pocket with an accessory loop provide plenty of storage for your medical essentials. Our modern tailored fit is tapered to enhance your shape without constricting your movement, and our 2-way comfort stretch helps give you added flexibility required of your work wear. Whether it's Landau scrubs for men or scrubs for women, we're known for producing scrubs that work as hard as you do!



## LANDAU WOMEN'S 5-POCKET FULL-LENGTH LAB COAT

**SKU:** 3153

**Features:**

- \* Classic Relaxed Fit – Generously cut to provide optimal comfort and ease of movement
- \* Breathable
- \* Fade Resistant
- \* 6 oz 65% Polyester/35% Cotton Twill
- \* 5 Pockets: 1 chest pocket with pen divider, 2 patch pockets, 2 interior patch pockets
- \* Four-button closure
- \* Side access to clothing under lab coat
- \* Back princess seams and inset belt for a flattering shape
- \* Wash before wearing. Colors may transfer or fade. Machine wash warm water. Do not use chlorine bleach. Tumble dry medium heat. Iron low heat.
- \* Size 10 Length: 37.875"
- \* Size 10 Sleeve Length: 23.5"



**Colors:**



**Sizes:** 0 2 4 6 8 10 12  
14 16 18 20

[Measurement / Size Chart](#)

[Click for Bulk Order Quote](#)

[Click for Pricing](#)

**Description:**

We design quality medical scrubs and uniforms with universal appeal. Comfortable and functional, this full-length lab coat for women features a movement-friendly fit and button-front silhouette made for effortless ensemble changes. Side access plus five pockets total ensure your medical essentials are always within easy reach. Landau is known for producing lab coats and scrubs for women that work as hard as you do!

## LANDAU WOMEN'S 3-POCKET FULL-LENGTH LAB COAT

**SKU:** 3155

**Features:**

- \* Classic Relaxed Fit – Generously cut to provide optimal comfort and ease of movement
- \* Breathable
- \* Fade Resistant
- \* 5.5 oz 65% Polyester/35% Cotton Plain Weave
- \* 3 Pockets: 1 chest pocket with pen divider, 2 patch pockets
- \* Four-button closure
- \* Side access to clothing under lab coat
- \* Back princess seams and inset belt for a flattering shape
- \* Wash before wearing. Colors may transfer or fade. Machine wash warm water. Do not use chlorine bleach. Tumble dry medium heat. Iron low heat.
- \* Size 10 Length: 37.875"
- \* Size 10 Sleeve Length: 23."



**Colors:**



**Sizes:** [4](#) [6](#) [8](#) [10](#) [14](#)

[Measurement / Size Chart](#)

[Click for Bulk Order Quote](#)

[Click for Pricing](#)

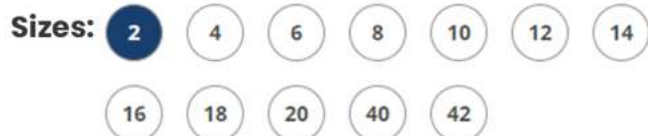
**Description:**

We design quality medical scrubs and uniforms with universal appeal. Comfortable and functional, this full-length lab coat for women features a movement-friendly fit and button-front silhouette made for effortless ensemble changes. Side access plus three pockets total ensure your medical essentials are always within easy reach. Landau is known for producing lab coats and scrubs for men that work as hard as you do!





**Colors:**



## LANDAU WOMEN'S 5-POCKET FULL-LENGTH NOTEBOOK LAB COAT

**SKU:** 3165

**Features:**

- \* Classic Relaxed Fit – Generously cut to provide optimal comfort and ease of movement
- \* Breathable
- \* Fade Resistant
- \* 5.5 oz 65% Polyester/35% Cotton Plain Weave
- \* Flattering two-piece sleeves for greater range of arm motion
- \* 5 Pockets: 1 chest pocket with pen divider, 2 patch pockets, 2 interior pockets to fit your notebook computer, 1 interior mesh ID holder
- \* Four-button closure
- \* Side access to clothing under lab coat
- \* Back darts and inset belt for a flattering shape
- \* Wash before wearing. Colors may transfer or fade. Machine wash warm water. Do not use chlorine bleach. Tumble dry medium heat. Iron low heat.
- \* Size 10 Length: 36.625"
- \* Size 10 Sleeve Length: 24.5"

[Measurement / Size Chart](#)

[Click for Bulk Order Quote](#)

[Click for Pricing](#)

**Description:**

We design quality medical scrubs and uniforms with universal appeal. Comfortable and functional, this full-length lab coat for women features a movement-friendly fit and button-front silhouette made for effortless ensemble changes. Side access plus five pockets total ensure your medical essentials are always within easy reach. Landau is known for producing lab coats and scrubs for women that work as hard as you do!

## LANDAU WOMEN'S 3-POCKET FULL-LENGTH LAB COAT

**SKU:** 3172

**Features:**

- \* Classic Relaxed Fit - Generously cut to provide optimal comfort and ease of movement
- \* Breathable
- \* Fade Resistant
- \* 8 oz 100% Cotton Twill
- \* 3 Pockets: 1 chest pocket with pen divider, 2 patch pockets
- \* Five cloth-knot button closure
- \* Wash before wearing. Colors may transfer or fade. Machine wash warm water. Do not use chlorine bleach. Tumble dry medium heat. Iron low heat.
- \* Size 10 Length: 40.25"
- \* Size 10 Sleeve Length: 23.75"



**Colors:**



**Sizes:** ☒ 0 ☐ 2 ☐ 4 ☐ 6 ☐ 8 ☐ 10 ☐ 12  
☐ 14 ☐ 16 ☐ 18 ☐ 20

[Measurement / Size Chart](#)

[Click for Bulk Order Quote](#)

[Click for Pricing](#)

**Description:**

A traditional classic, this notch-collar lapel lab coat for women features five cloth-knot buttons along the front placket. Two roomy lower patch pockets and a chest pocket with instrument division give storage to spare for all your medical accessories. Plus, its center back vent gives you extra mobility at work. 100% Cotton Twill. Length: 40 1/4" (Size 10).





**Colors:**



## LANDAU UNISEX 2-POCKET FULL-LENGTH LAB COAT

**SKU:** 3176

**Features:**

- \* Classic Relaxed Fit – Generously cut to provide optimal comfort and ease of movement
- \* women may want to order one size smaller in this unisex piece
- \* Breathable
- \* Fade Resistant
- \* 4.6 oz 65% Polyester/35% Cotton Plain Weave
- \* High Neck Closure
- \* 2 roomy top entry pockets
- \* Knit cuffs keep fluid contained
- \* Machine wash cold with similar colors. Do not bleach. Tumble dry low.
- \* Size Medium Length: 41.625"
- \* Size Medium Sleeve Length: 27.75"

[Measurement / Size Chart](#)

[Click for Bulk Order Quote](#)

[Click for Pricing](#)

**Description:**

Look and feel like a professional in this high-neck, full-length dental lab coat from Landau. Keep your wallet, phone, cash, and medical tools easily accessible with two deep side pockets. Stay comfortable all day with our Classic Fit that is generously cut to provide comfort and ease of movement. The soft brushed, breathable fabric will keep you looking effortlessly sleek throughout your shift. 65% Polyester/35% Cotton.



**Colors:**



**Sizes:** [XSM](#) [SML](#) [MED](#) [LGE](#) [XLG](#) [XXL](#) [3XL](#)

## LANDAU UNISEX 2-POCKET FULL-LENGTH LAB COAT

**SKU:** 3178

**Features:**

- \* Classic Relaxed Fit – Generously cut to provide optimal comfort and ease of movement
- \* women may want to order one size smaller in this unisex piece
- \* Breathable
- \* Fade Resistant
- \* 4.6 oz 65% Polyester/35% Cotton Plain Weave
- \* Unisex crew neck lab coat
- \* 2 Pockets: 2 patch pockets
- \* Knit cuffs keep liquid From splashing into sleeve
- \* Five snap closure
- \* Wash before wearing. Colors may transfer or fade. Machine wash warm water. Do not use chlorine bleach. Tumble dry medium heat. Iron low heat.
- \* Size Medium Length: 41.5"
- \* Size Medium Sleeve Length: 27.75"

[Measurement / Size Chart](#)

[Click for Bulk Order Quote](#)

[Click for Pricing](#)

**Description:**

Cover yourself in style with this Landau unisex full-length lab coat. Fade-resistant, breathable material is brushed for a soft comfortable feel with a clean professional appearance. Featuring two patch pockets, a crew neck, stockinette sleeve cuffs, and five-snap closure, this coat provides all the storage and convenience you need for your day. 65% Polyester/35% Combed Cotton. Medium Length: 41 3/4".



## LANDAU UNISEX 3-POCKET FULL-LENGTH LAB COAT

**SKU:** 3187

### Features:

- \* Classic Relaxed Fit – Generously cut to provide optimal comfort and ease of movement
- \* women may want to order one size smaller in this unisex piece
- \* 5.5 oz 65% Polyester/35% Cotton Plain Weave
- \* Flattering two-piece sleeves for greater range of arm motion
- \* 3 Pockets: 1 top pocket, 2 bottom side access pockets
- \* Four-button closure
- \* Side access to clothing under lab coat
- \* Four-button closure
- \* Wash before wearing. Colors may transfer or fade. Machine wash warm water. Do not use chlorine bleach. Tumble dry medium heat. Iron low heat.
- \* Size Medium Length: 39"
- \* Size Medium Sleeve Length: 25"



### Colors:



**Sizes:** [XSM](#) [SML](#) [MED](#) [LGE](#) [XLG](#) [XXL](#) [3XL](#)

[Measurement / Size Chart](#)

[Click for Bulk Order Quote](#)

[Click for Pricing](#)

### Description:

Long unisex lab coat with traditional collar and four-button front closure. One breast pocket and two lower double pockets with plenty of room for all your medical accessories. Two side-entry pockets on seam. 65% Polyester/35% Combed Cotton. Medium Length: 39"

## LANDAU WOMEN'S 5-POCKET CONSULTATION JACKET

**SKU:** 3230

### Features:

- \* Classic Relaxed Fit – Generously cut to provide optimal comfort and ease of movement
- \* Breathable
- \* Fade Resistant
- \* 5.5 oz 65% Polyester/35% Cotton Plain Weave
- \* Flattering two-piece sleeves for greater range of arm motion
- \* 5 Pockets: 1 chest pocket, 2 patch pockets, 2 interior patch pockets
- \* Two-button closure
- \* Wash before wearing. Colors may transfer or fade. Machine wash warm water. Do not use chlorine bleach. Tumble dry medium heat. Iron low heat.
- \* Size 10 Length: 28.625"
- \* Size 10 Sleeve Length: 22.75"



**Colors:**



**Sizes:** 0 2 4 6 8 10 12  
14 16 18 20 40 42 44

[Measurement / Size Chart](#)

[Click for Bulk Order Quote](#)

[Click for Pricing](#)

### Description:

No need to get a second opinion; this consultation lab coat for women is truly stylish. Featuring two button closure, three outside pockets and two lower inside pockets, this jacket is a great functional layering piece for all your medical accessories. 65% Polyester/35% Combed Cotton Medium length: 28 1/2" (Size 10).



## LANDAU WOMEN'S 3-POCKET MID-LENGTH LAB COAT

**SKU:** 3600SC

### Features:

- \* Modern Tailored Fit - Tapered to flatter your shape without limiting movement
- \* 5.5 oz 65% Polyester/35% Cotton Twill
- \* Princess seams for feminine shaping
- \* 3 Pockets: 2 patch pockets, 1 accessory pocket
- \* Four-button closure
- \* Side access to clothing under lab coat
- \* Back yoke for a flattering shape
- \* Wash before wearing. Machine wash cold. Do not bleach. Tumble dry low heat. Remove promptly. Iron low heat.
- \* Size Medium Length: 35.75"
- \* Size Medium Sleeve Length: 24.625"



### Colors:



**Sizes:** **XXS** XSM SML MED LGE XLG XXL

3XL 4XL 5XL

[Measurement / Size Chart](#)

[Click for Bulk Order Quote](#)

[Click for Pricing](#)

### Description:

Comfortable and functional, this mid-length lab coat for women features princess seams and a button-front silhouette made for effortless ensemble changes. Made with twice the yarn for durability, this breathable material is brushed for a soft comfortable feel and withstands commercial laundering. Side access plus four pockets ensure your medical essentials are always within easy reach. We design quality scrubs and medical uniforms with universal appeal. Landau scrubs for women are known to work as hard as you do!

## LANDAU UNISEX 4-POCKET MID-LENGTH LAB COAT

**SKU:** 3610SC

### Features:

- \* Modern Tailored Fit - Tapered to flatter your shape without limiting movement
- \* 5.5 oz 65% Polyester/35% Cotton Twill
- \* 4 Pockets: 1 chest pocket with pen divider, 2 patch pockets, 1 accessory pocket
- \* Four-button closure
- \* Side access to clothing under lab coat
- \* Back yoke for a flattering shape
- \* Wash before wearing. Machine wash cold. Do not bleach. Tumble dry low heat. Remove promptly. Iron low heat.
- \* Size Medium Length: 35.75"
- \* Size Medium Sleeve Length: 24.625"



### Colors:



**Sizes:** **XXS** XSM SML MED LGE XLG XXL

3XL 4XL 5XL

[Measurement / Size Chart](#)

[Click for Bulk Order Quote](#)

[Click for Pricing](#)

### Description:

Comfortable and functional, this unisex mid-length lab coat features a vented back and a button-front silhouette made for effortless ensemble changes. Made with twice the yarn for durability, this breathable material is brushed for a soft comfortable feel and withstands commercial laundering. Side access plus four pockets ensure your medical essentials are always within easy reach. We design quality scrubs and medical uniforms with universal appeal. Landau scrubs for women are known to work as hard as you do!



## LANDAU SCRUB ZONE UNISEX 3-POCKET MID-LENGTH LAB COAT

**SKU:** 86002

### Features:

- \* Classic Relaxed Fit – Generously cut to provide optimal comfort and ease of movement
- \* women may want to order one size smaller in this unisex piece
- \* Breathable
- \* Fade Resistant
- \* 4.25 oz 65% Polyester/35% Cotton Plain Weave
- \* Flattering two-piece sleeves for greater range of arm motion
- \* 3 Pockets: 1 chest pocket, 2 patch pockets promptly. Iron low heat.
- \* Three-button closure
- \* Wash before wearing. Machine wash cold. Do not bleach. Tumble dry low heat. Remove promptly. Iron low heat.
- \* Size Medium Length: 35.25"
- \* Size Medium Sleeve Length: 26.125"



### Colors:



**Sizes:** **XXS** XSM SML MED LGE XLG XXL

3XL 4XL 5XL

[Measurement / Size Chart](#)

[Click for Bulk Order Quote](#)

[Click for Pricing](#)

### Description:

We design quality medical scrubs and uniforms with universal appeal. Comfortable and functional, this mid-length lab coat features a movement-friendly fit and button-front silhouette made for effortless ensemble changes. Three pockets total ensure your medical essentials are always within easy reach. Landau is known for producing lab coats and scrubs for women that work as hard as you do!

## LANDAU WOMEN'S 3-POCKET CONSULTATION JACKET

**SKU:** 8726

**Features:**

- \* Modern Tailored Fit - Tapered to flatter your shape without limiting movement
- \* Breathable
- \* Fade Resistant
- \* 5.5 oz 65% Polyester/35% Cotton Plain Weave
- \* Front and back princess seams for feminine shaping
- \* 3 Pockets: 1 chest pocket, 2 patch pockets
- \* Three-button closure
- \* Back inset belt for a flattering shape
- \* Wash before wearing. Colors may transfer or fade. Machine wash warm water. Do not use chlorine bleach. Tumble dry medium heat. Iron low heat.
- \* Size Medium Length: 31.375"
- \* Size Medium Sleeve Length: 23.125"



**Colors:**



**Sizes:** [XSM](#) [SML](#) [MED](#) [LGE](#) [XLG](#) [XXL](#) [3XL](#)

[Measurement / Size Chart](#)

[Click for Bulk Order Quote](#)

[Click for Pricing](#)

**Description:**

Three Buttons. Three Pockets. One great consultation coat. This classic three-button lab coat for women features one breast pocket and two large lower pockets. For style, we've added a notched lapel, button tab back belt, and front and back princess seams. 65% Polyester/35% Combed Cotton Medium length 31 3/8".



## LANDAU UNISEX 2-POCKET FULL-LENGTH LAB COAT

**SKU:** 9135-20

### Features:

- \* Classic Relaxed Fit – Generously cut to provide optimal comfort and ease of movement
- \* Breathable
- \* Fade Resistant
- \* Front & Sleeves: 3.7 oz 99% Texture Polyester/1% Carbon Fiber Plain Weave
- \* Back: 4.6 oz 65% Polyester/35% Cotton
- \* Level 2 protection on front and sleeves
- \* Water-based fluid resistance and inherent static control
- \* 2 Pockets: 2 patch pockets
- \* Snap-front closure
- \* pinstripe pattern on front and sleeves
- \* Knit cuffs provide extra fluid protection
- \* Raglan sleeves for a greater range of shoulder motion
- \* Side access to clothing under lab coat
- \* Wash before wearing. Colors may transfer or fade. Machine wash warm water. Do not use chlorine bleach. Tumble dry medium heat. Iron low heat.
- \* Size Medium Length: 40.75"
- \* Size Medium Sleeve Length: 34.875"



### Colors:



**Sizes:** [XSM](#) [SML](#) [MED](#) [LGE](#) [XLG](#) [XXL](#) [3XL](#)

[Measurement / Size Chart](#)

[Click for Bulk Order Quote](#)

[Click for Pricing](#)

### Description:

We design quality medical scrubs and uniforms with universal appeal. Comfortable and functional, this full-length lab coat features a movement-friendly fit and sophisticated silhouette with moisture-barrier, water-repellent fabric made for your busiest days. Two pockets ensure your medical essentials are always within easy reach. Landau is known for producing lab coats and scrubs for that work as hard as you do!



Colors:



Sizes: **MED** LGE XLG XXL

## LANDAU PROFLEX MEN'S 5-POCKET FULL-LENGTH LAB COAT

**SKU:** 3043

### Features:

- \* Modern Tailored Fit - Tapered to flatter your shape without limiting movement
- \* Wrinkle Resistant
- \* 4-Way Stretch
- \* 4.89 oz 95% Polyester/5% Spandex Plain Weave
- \* 4-button closure
- \* 5 Pockets: 1 chest pocket with instrument pocket, 1 triple patch pocket with scissors tape, 1 single patch pocket with accessory loop
- \* Locker loop in center back for easy hanging
- \* Center back vent for extra ease of movement
- \* Side access to clothing under lab coat
- \* Wash before wearing. Machine wash cold. Do not bleach. Tumble dry low heat. Remove promptly. Iron low heat.
- \* Size Medium Length: 33.75"
- \* Size Medium Sleeve Length: 25.5"

[Measurement / Size Chart](#)

[Click for Bulk Order Quote](#)

[Click for Pricing](#)

### Description:

We design quality medical scrubs and medical uniforms with universal appeal. This full-length white lab coat for men features a 4-button closure, a locker loop for easy hanging, a back yoke and inset belt for a flattering shape, and a center back vent for extra ease of movement. Your medical essentials will be within easy reach five pockets and side access to your clothing under the coat. Our modern tailored fit is tapered to enhance your shape without constricting your movement, and our 2-way comfort stretch helps give you added flexibility required of your work wear. Whether it's Landau scrubs for men or scrubs for women, we're known for producing scrubs that work as hard as you do!





**Colors:**



**Sizes:**



## LANDAU MEN'S 5-POCKET FULL-LENGTH LAB COAT

**SKU:** 3124

**Features:**

- \* Classic Relaxed Fit – Generously cut to provide optimal comfort and ease of movement
- \* Breathable
- \* Available in 3 fabrics: WWSC: 5.5 oz 65% Polyester/35% Cotton Sanded Twill, WWVC: 6 oz 65% Polyester/35% Cotton Twill, WWF: 8 oz 100% Cotton Twill
- \* Flattering two-piece sleeves for greater range of arm motion
- \* 5 Pockets: 1 chest pocket, 2 patch pockets, 2 interior patch pockets
- \* Four-button closure
- \* Side access to clothing under lab coat
- \* Back double pleats and inset belt for a flattering shape
- \* Wash before wearing. Colors may transfer or fade. Machine wash warm water. Do not use chlorine bleach. Tumble dry medium heat. Iron low heat.
- \* Size 40 Length: 36.875"
- \* Size 40 Sleeve Length: 24.5"

[Measurement / Size Chart](#)

[Click for Bulk Order Quote](#)

[Click for Pricing](#)

**Description:**

We design quality medical scrubs and uniforms with universal appeal. Comfortable and functional, this full-length lab coat for men features a movement-friendly fit and button-front silhouette made for effortless ensemble changes. Side access plus five pockets total ensure your medical essentials are always within easy reach. Available in three fabrics: 5.5 oz 65% Polyester/35% Cotton Sanded Twill, 6 oz 65% Polyester/35% Cotton Twill, and 8 oz 100% Cotton Twill. Landau is known for producing lab coats and scrubs for men that work as hard as you do!

## LANDAU MEN'S 3-POCKET FULL-LENGTH LAB COAT

**SKU:** 3132

**Features:**

- \* Classic Relaxed Fit – Generously cut to provide optimal comfort and ease of movement
- \* Breathable
- \* Fade Resistant
- \* 5.5 oz 65% Polyester/35% Cotton Plain Weave
- \* Notch collar lab coat for men
- \* 3 Pockets: one top and two bottom side access pockets
- \* Back inset belt
- \* Center back vent for ease of movement
- \* Four button closure
- \* Wash before wearing. Colors may transfer or fade. Machine wash warm water. Do not use chlorine bleach. Tumble dry medium heat. Iron low heat.
- \* Size 40 Length: 39.5"
- \* Size 40 Sleeve Length: 24.5"



**Colors:**



**Sizes:** 32 34 38 40 42 44 46  
48 50 52

[Measurement / Size Chart](#)

[Click for Bulk Order Quote](#)

[Click for Pricing](#)

**Description:**

This full-length, four-button lab coat for men is complete with a notch collar lapel, center back vent, and side hand access that perfect this medical uniform essential. Our relaxed fit provides a generous cut to provide optimal comfort and ease of movement. Landau lab coats for men are known to work as hard as you do! 65% Polyester/35% Cotton. Medium Length: 39 1/2" (Size 40).



## LANDAU MEN'S 3-POCKET FULL-LENGTH LAB COAT

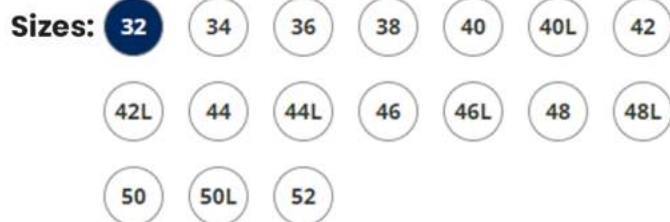
**SKU:** 3138

**Features:**

- \* Classic Relaxed Fit – Generously cut to provide optimal comfort and ease of movement
- \* Breathable
- \* 8 oz 100% Cotton Twill
- \* Flattering two-piece sleeves for greater range of arm motion
- \* 3 Pockets: 1 chest pocket with pen divider, 2 patch pockets
- \* Five cloth-knot button closure
- \* Side access to clothing under lab coat
- \* Back double pleats and inset belt for a flattering shape
- \* Wash before wearing. Colors may transfer or fade. Machine wash warm water. Do not use chlorine bleach. Tumble dry medium heat. Iron low heat.
- \* Size 40 Length: 43.375"
- \* Size 40 Sleeve Length: 24.625"



**Colors:**



[Measurement / Size Chart](#)

[Click for Bulk Order Quote](#)

[Click for Pricing](#)

**Description:**

We design quality medical scrubs and medical uniforms with universal appeal. Comfortable and functional, this full-length lab coat for men features a movement-friendly fit and button-front silhouette made for effortless ensemble changes. Side access plus three pockets total ensure your medical essentials are always within easy reach. Landau is known for producing lab coats and scrubs for men that work as hard as you do!

## LANDAU MEN'S 3-POCKET FULL-LENGTH LAB COAT

**SKU:** 3139

**Features:**

- \* Classic Relaxed Fit – Generously cut to provide optimal comfort and ease of movement
- \* Breathable
- \* Fade Resistant
- \* 7.5 oz 65% Polyester/35% Cotton Twill
- \* Notch collar lab coat for men
- \* 3 Pockets: one top and two bottom side access pockets
- \* Sleeve Length: 24"
- \* Two piece jacket sleeve
- \* Straight back Styling
- \* Five button closure
- \* Wash before wearing. Colors may transfer or fade. Machine wash warm water. Do not use chlorine bleach. Tumble dry medium heat. Iron low heat.
- \* Size 40 Length: 40.5"
- \* Size 40 Sleeve Length: 24.625"



**Colors:**



**Sizes:** 32 36 38 40 42 44 48  
50

[Measurement / Size Chart](#)

[Click for Bulk Order Quote](#)

[Click for Pricing](#)

**Description:**

Classic full-length lab coat for men with five cloth-knot buttons, sewn-down back pleat, and three patch pockets with side hand access. This lab coat gives you the style you want paired with the function you need in a doctor's coat. 100% Cotton Super Twill White (WWF). Length: 45" (Size 42).



## LANDAU MEN'S 3-POCKET FULL-LENGTH LAB COAT

**SKU:** 3140

### Features:

- \* Classic Relaxed Fit – Generously cut to provide optimal comfort and ease of movement
- \* Breathable
- \* Fade Resistant
- \* 7.5 oz 65% Polyester/35% Cotton Twill
- \* Flattering two-piece sleeves for greater range of arm motion
- \* 3 Pockets: 1 chest pocket, 2 patch pockets
- \* Five-button closure
- \* Side access to clothing under lab coat
- \* Back double pleats and inset belt for a flattering shape
- \* Wash before wearing. Colors may transfer or fade. Machine wash warm water. Do not use chlorine bleach. Tumble dry medium heat. Iron low heat.
- \* Size 40 Length: 43.375"
- \* Size 40 Sleeve Length: 24.5"



### Colors:



**Sizes:** **32** 34 36 38 40 42 44  
46 48 50 52

[Measurement / Size Chart](#)

[Click for Bulk Order Quote](#)

[Click for Pricing](#)

### Description:

We design quality medical scrubs and uniforms with universal appeal. Comfortable and functional, this full-length lab coat features a movement-friendly fit and button-front silhouette made for effortless ensemble changes. Three pockets total plus side access ensure your medical essentials are always within easy reach. Landau is known for producing lab coats and scrubs for men and women that work as hard as you do!



**Colors:**



**Sizes:**

32	34	36	38	38L	40	40L
42	42L	44	44L	46	46L	48
48L	50	50L	52	52L	54	54L
56	56L					

[Measurement / Size Chart](#)

[Click for Bulk Order Quote](#)

[Click for Pricing](#)

**Description:**

We design quality medical scrubs and medical uniforms with universal appeal. Comfortable and functional, this full-length lab coat for men features a five button closure with a straight back, side hand access, and three front pockets ensure your medical essentials are always within easy reach. Landau is known for producing lab coats and scrubs for women that work as hard as you do!

## LANDAU MEN'S 3-POCKET FULL-LENGTH LAB COAT

**SKU:** 3145

**Features:**

- \* Classic Relaxed Fit – Generously cut to provide optimal comfort and ease of movement
- \* Breathable
- \* Fade Resistant
- \* 5.5 oz 65% Polyester/35% Cotton Plain Weave
- \* Flattering two-piece sleeves for greater range of arm motion
- \* 3 Pockets: 1 chest pocket with pen divider, 2 patch pockets
- \* Five-button closure
- \* Wash before wearing. Colors may transfer or fade. Machine wash warm water. Do not use chlorine bleach. Tumble dry medium heat. Iron low heat.
- \* Size 40 Length: 41.375"
- \* Size 40 Sleeve Length: 24.5"





**Colors:**



**Sizes:** 32 34 36 38 40 42 44 46 48 50 52 54 56

## LANDAU MEN'S 3-POCKET MID-LENGTH LAB COAT

**SKU:** 3148

**Features:**

- \* Classic Relaxed Fit - Generously cut to provide optimal comfort and ease of movement
- \* Breathable
- \* Fade Resistant
- \* 5.5 oz 65% Polyester/35% Cotton Plain Weave
- \* Flattering two-piece sleeves for greater range of arm motion
- \* 3 Pockets: 1 chest pocket with pen divider, 2 patch pockets
- \* Four-button closure
- \* Back double pleats and inset belt for a flattering shape
- \* Wash before wearing. Colors may transfer or fade. Machine wash warm water. Do not use chlorine bleach. Tumble dry medium heat. Iron low heat.
- \* Size 40 Length: 35.375"
- \* Size 40 Sleeve Length: 24.5"

[Measurement / Size Chart](#)

[Click for Bulk Order Quote](#)

[Click for Pricing](#)

**Description:**

Compliments will be contagious when you wear this four button staff length lab coat for men. With three instrument-friendly front pockets and sewn-down back belt over pleats, this doctor coat exudes style and function! 65% Polyester/35% Combed Cotton. White (WWY). Length: 35" (Size 40).

## LANDAU MEN'S 3-POCKET MID-LENGTH LAB COAT

**SKU:** 3163

**Features:**

- \* Classic Relaxed Fit – Generously cut to provide optimal comfort and ease of movement
- \* Breathable
- \* Fade Resistant
- \* 7.5 oz 65% Polyester/35% Cotton Twill
- \* Notch collar staff length lab coat for men
- \* 3 Pockets: one top and two bottom side access pockets
- \* Belted back stitched over pleats for ease of motion
- \* Sleeve Length: 24"
- \* 2 piece jacket sleeve
- \* Four button closure
- \* Wash before wearing. Colors may transfer or fade. Machine wash warm water. Do not use chlorine bleach. Tumble dry medium heat. Iron low heat.
- \* Size 40 Length: 35.5"
- \* Size 40 Sleeve Length: 24.625"



**Colors:**



**Sizes:**



[Measurement / Size Chart](#)

[Click for Bulk Order Quote](#)

[Click for Pricing](#)

**Description:**

We design quality medical scrubs and uniforms with universal appeal. Comfortable and functional, this mid-length lab coat features a movement-friendly fit and a button-front silhouette made for effortless ensemble changes. Three pockets total plus side access ensure your medical essentials are always within easy reach. Landau is known for producing lab coats and scrubs for men and women that work as hard as you do!



## LANDAU MEN'S 5-POCKET MID-LENGTH LAB COAT

**SKU:** 3166

**Features:**

- \* Classic Relaxed Fit – Generously cut to provide optimal comfort and ease of movement
- \* Breathable
- \* Fade Resistant
- \* 5.5 oz 65% Polyester/35% Cotton Plain Weave
- \* Notch collar staff length lab coat for men
- \* 5 Pocket: 3 Front Pockets, Side Access. 2 Lower Inside Pockets
- \* Stitch down back belt over pleat for ease of movement
- \* Sleeve Length: 24"
- \* 2 piece jacket sleeve
- \* Four button closure
- \* Wash before wearing. Colors may transfer or fade. Machine wash warm water. Do not use chlorine bleach. Tumble dry medium heat. Iron low heat.
- \* Size 40 Length: 35.5"
- \* Size 40 Sleeve Length: 24.625"



**Colors:**



**Sizes:** **32** 40 42 44 46 50 52

[Measurement / Size Chart](#)

[Click for Bulk Order Quote](#)

[Click for Pricing](#)

**Description:**

Our four-button lab coat for men was made with you in mind. With three front pockets, side hand access, and two lower inside pockets, this mid-length lab coat has the function you need with the styling you want including a stitched down back belt over pleats for added detail in your medical clothing. 65% Polyester/35% Combed Cotton. Length: 36" (Size 42).

## LANDAU MEN'S 5-POCKET MID-LENGTH NOTEBOOK LAB COAT

**SKU:** 3174

**Features:**

- \* Classic Relaxed Fit - Generously cut to provide optimal comfort and ease of movement
- \* Breathable
- \* Fade Resistant
- \* 5.5 oz 65% Polyester/35% Cotton Plain Weave
- \* Flattering two-piece sleeves for greater range of arm motion
- \* 5 Pockets: 1 chest pocket with pen divider, 2 patch pockets, 2 interior pockets to fit your notebook computer, 1 interior mesh ID holder
- \* Four-button closure
- \* Back darts and inset belt for a flattering shape
- \* Wash before wearing. Colors may transfer or fade. Machine wash warm water. Do not use chlorine bleach. Tumble dry medium heat. Iron low heat.
- \* Size 40 Length: 36.875"
- \* Size 40 Sleeve Length: 25.625"



**Colors:**



**Sizes:**

32

34

36

38

40

42

44

46

48

50

52

[Measurement / Size Chart](#)

[Click for Bulk Order Quote](#)

[Click for Pricing](#)

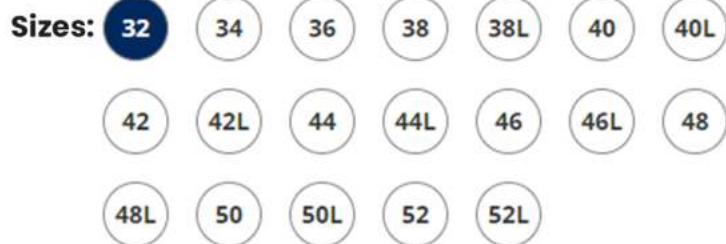
**Description:**

We design quality medical scrubs and uniforms with universal appeal. Comfortable and functional, this full-length lab coat features a movement-friendly fit and four-button silhouette made for effortless ensemble changes. Side access plus five pockets total ensure your medical essentials are always within easy reach. Landau is known for producing lab coats and scrubs for women that work as hard as you do!





**Colors:**



## LANDAU MEN'S 5-POCKET CONSULTATION JACKET

**SKU:** 3224

**Features:**

- \* Classic Relaxed Fit – Generously cut to provide optimal comfort and ease of movement
- \* Fade Resistant
- \* Available in 2 fabrics: WWT: 7.5 oz 65% Polyester/35% Cotton Twill, WWY: 5.5 oz 65% Polyester/35% Cotton Plain Weave
- \* Flattering two-piece sleeves for greater range of arm motion
- \* 5 Pockets: 1 chest pocket, 2 patch pockets, 2 interior patch pockets
- \* Three-button closure
- \* Wash before wearing. Colors may transfer or fade. Machine wash warm water. Do not use chlorine bleach. Tumble dry medium heat. Iron low heat.
- \* Size 40 Length: 31.125"
- \* Size 40 Sleeve Length: 24.875"

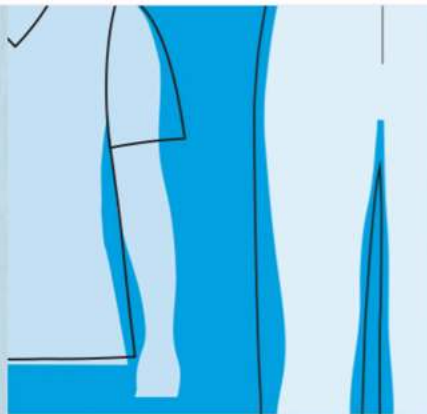
[Measurement / Size Chart](#)

[Click for Bulk Order Quote](#)

[Click for Pricing](#)

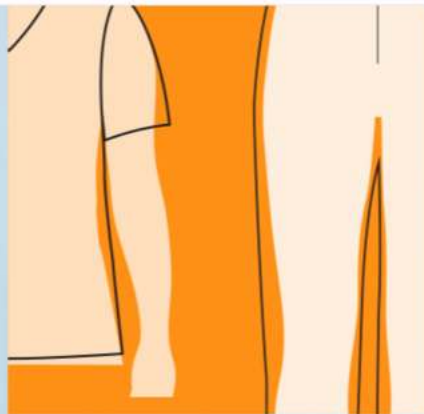
**Description:**

This two piece vented back consultant lab coat for men has three button front, three outer pockets, and two lower inside pockets for your medical accessories. Regular Sizes 32-52 Tall Sizes (38-52) only in WWT (adds 2" in sleeve and coat length). 65% Polyester/35% Combed Cotton. Length: 31 1/8" (Size 40), 33 1/8" (Size 40L).



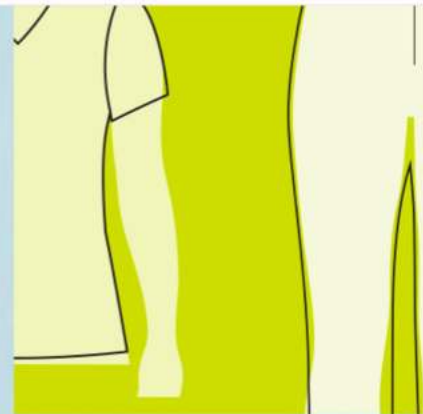
### CLASSIC

Generously cut to provide optimal comfort and ease of movement.



### MODERN

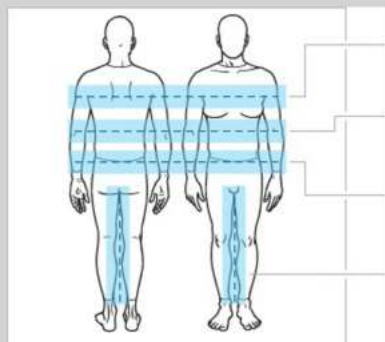
Tailored to flatter your shape without limiting movement.



### CONTEMPORARY

Contoured to conform to your body and complement your shape.

## MEASUREMENT TIPS



**Bust-** Measures the fullest part of your chest.

**Waist-** Bend to one side to the natural crease of your waist and measure across this point.

**Hip-** Standing with feet together, measure around the fullest part of your hips and rear.

**Inseam-** Measure from the bottom of the crotch seam to the bottom of the hem along the inside seam.

### Landau Men's Size Chart:

	XSM	SML	MED	LGE	XLG	2XL	3XL	4XL	5XL
<b>Chest</b>	30-32	34-36	38-40	42-44	46-48	50-52	54-56	58-60	62-64
<b>Waist</b>	25-27	28-30	31-34	35-38	39-42	43-46	47-51	52-55	56-60
<b>Hip</b>	34-35	36-38	39-41	42-45	46-49	50-53	54-57	58-61	62-65





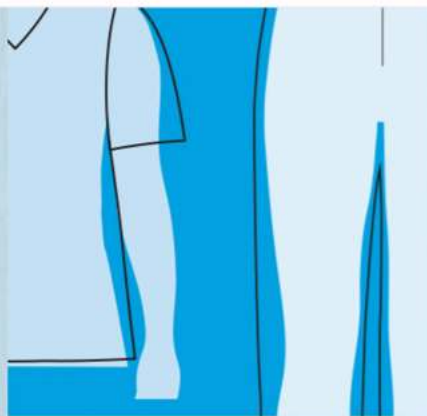
**HY Supplies Inc**

The Place to Land for Quality

Toll-Free : +1-800-437-9182

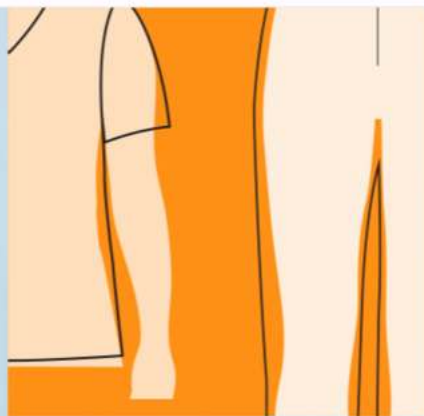
Email Us at : [custserv@hysupplies.com](mailto:custserv@hysupplies.com)

Website : <http://www.hysupplies.net>



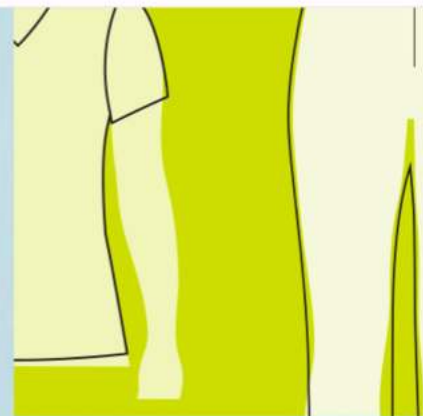
### CLASSIC

Generously cut to provide optimal comfort and ease of movement.



### MODERN

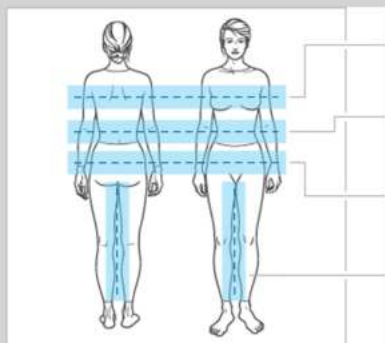
Tailored to flatter your shape without limiting movement.



### CONTEMPORARY

Contoured to conform to your body and complement your shape.

## MEASUREMENT TIPS



**Bust-** Measures the fullest part of your chest.

**Waist-** Bend to one side to the natural crease of your waist and measure across this point.

**Hip-** Standing with feet together, measure around the fullest part of your hips and rear.

**Inseam-** Measure from the bottom of the crotch seam to the bottom of the hem along the inside seam.

Landau Women's Size Chart:

	XXS	XSM	SML	MED	LGE	XLG	1XL	2XL	3XL	4XL	5XL
<b>DRESS/PANT</b>	0	2-4	6-8	10-12	14	16	18	20	22-24	26-28	30-32
<b>BUST</b>	29-30	31-33	34-35	36-38	39-42	43-44	45-46	47-49	50-53	54-57	58-61
<b>WAIST</b>	22-23	24-25	26-28	29-31	32-34	35-36	37-38	39-41	42-45	46-49	50-53
<b>HIPS</b>	32-33	34-35	36-38	39-41	42-44	45-46	47-48	49-51	52-55	56-59	60-63



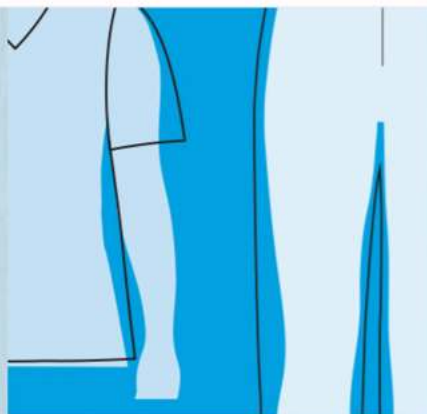
**HY Supplies Inc**

The Place to Land for Quality

Toll-Free : +1-800-437-9182

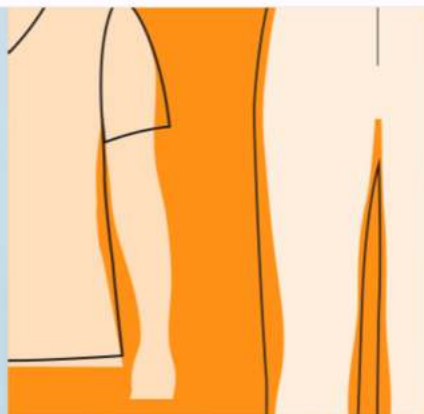
Email Us at : [custserv@hysupplies.com](mailto:custserv@hysupplies.com)

Website : <http://www.hysupplies.net>



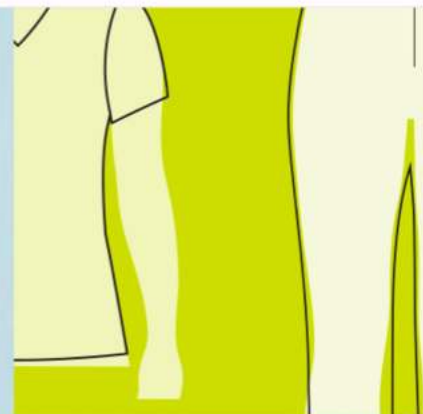
### CLASSIC

Generously cut to provide optimal comfort and ease of movement.



### MODERN

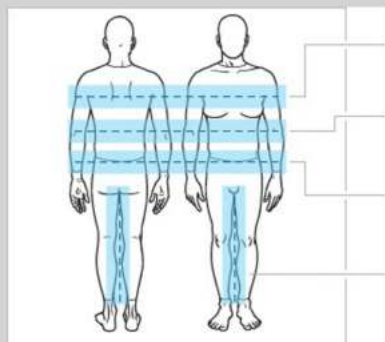
Tailored to flatter your shape without limiting movement.



### CONTEMPORARY

Contoured to conform to your body and complement your shape.

## MEASUREMENT TIPS



**Bust-** Measures the fullest part of your chest.

**Waist-** Bend to one side to the natural crease of your waist and measure across this point.

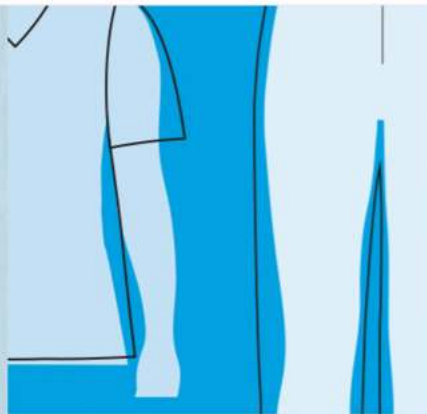
**Hip-** Standing with feet together, measure around the fullest part of your hips and rear.

**Inseam-** Measure from the bottom of the crotch seam to the bottom of the hem along the inside seam.

Landau Unisex Size Chart:

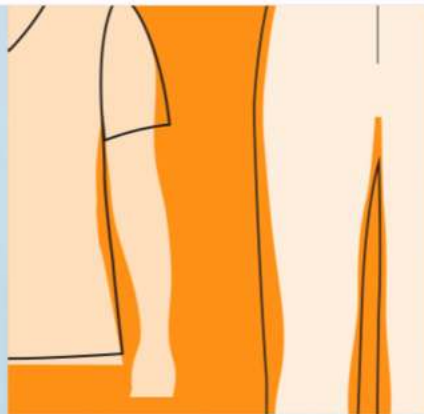
	XXS	XSM	SML	MED	LGE	XLG	2XL	3XL	4XL	5XL
<b>Chest</b>	27-29	30-32	34-36	38-40	42-44	46-48	50-52	54-56	58-60	62-64
<b>Waist</b>	22-24	25-27	28-30	31-34	35-38	39-42	43-46	47-51	52-55	56-60
<b>Hip</b>	31-33	34-35	36-38	39-41	42-45	46-49	50-53	54-57	58-61	62-65





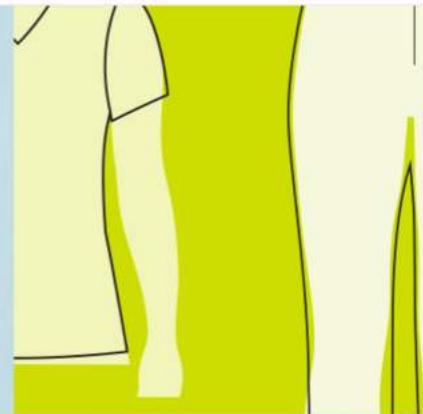
### CLASSIC

Generously cut to provide optimal comfort and ease of movement.



### MODERN

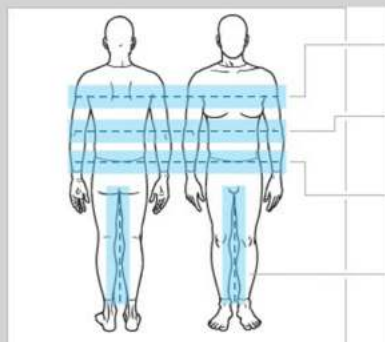
Tailored to flatter your shape without limiting movement.



### CONTEMPORARY

Contoured to conform to your body and complement your shape.

## MEASUREMENT TIPS



**Bust-** Measures the fullest part of your chest.

**Waist-** Bend to one side to the natural crease of your waist and measure across this point.

**Hip-** Standing with feet together, measure around the fullest part of your hips and rear.

**Inseam-** Measure from the bottom of the crotch seam to the bottom of the hem along the inside seam.

### Landau Men's Size Chart:

	XSM	SML	MED	LGE	XLG	2XL	3XL	4XL	5XL
<b>Chest</b>	30-32	34-36	38-40	42-44	46-48	50-52	54-56	58-60	62-64
<b>Waist</b>	25-27	28-30	31-34	35-38	39-42	43-46	47-51	52-55	56-60
<b>Hip</b>	34-35	36-38	39-41	42-45	46-49	50-53	54-57	58-61	62-65



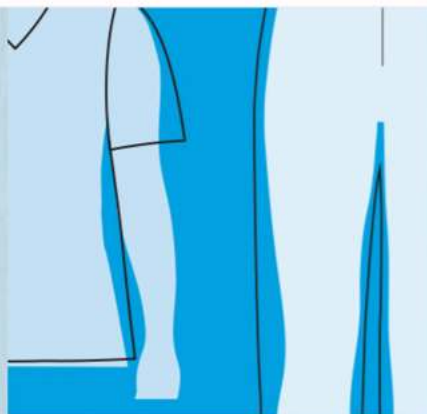
**HY Supplies Inc**

The Place to Land for Quality

Toll-Free : +1-800-437-9182

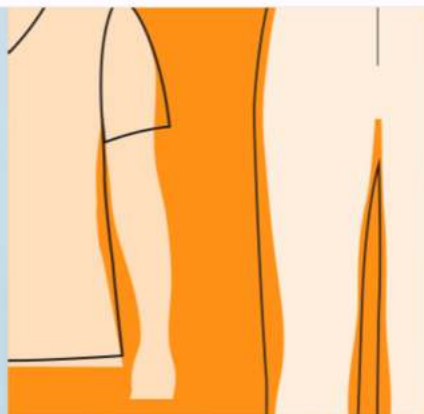
Email Us at : [custserv@hysupplies.com](mailto:custserv@hysupplies.com)

Website : <http://www.hysupplies.net>



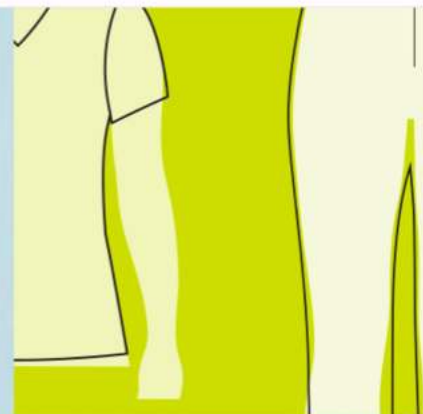
### CLASSIC

Generously cut to provide optimal comfort and ease of movement.



### MODERN

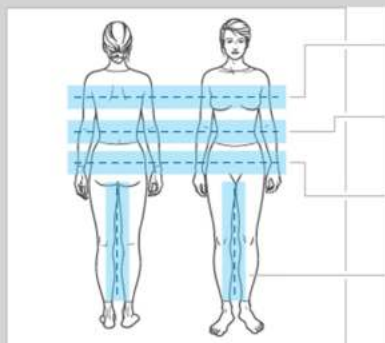
Tailored to flatter your shape without limiting movement.



### CONTEMPORARY

Contoured to conform to your body and complement your shape.

## MEASUREMENT TIPS



**Bust-** Measures the fullest part of your chest.

**Waist-** Bend to one side to the natural crease of your waist and measure across this point.

**Hip-** Standing with feet together, measure around the fullest part of your hips and rear.

**Inseam-** Measure from the bottom of the crotch seam to the bottom of the hem along the inside seam.

Landau Women's Size Chart:

	XXS	XSM	SML	MED	LGE	XLG	2XL	3XL	4XL	5XL
<b>DRESS SIZE</b>	0-2	4-6	8-10	12-14	16-18	20	40-42	44-46	48-50	50 - 52
<b>BUST</b>	29-30	31-33	34-35	36-38	39-42	43-45	46-49	50-53	54-57	58-61
<b>WAIST</b>	22-23	24-25	26-28	29-31	32-34	35-37	38-41	42-45	46-49	50-53
<b>HIPS</b>	32-33	34-35	36-38	39-41	42-44	45-47	48-51	52-55	56-59	60-63





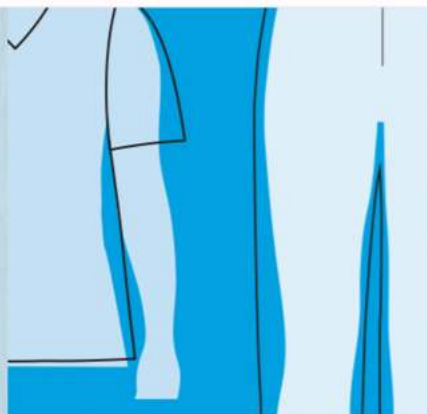
**HY Supplies Inc**

The Place to Land for Quality

Toll-Free : +1-800-437-9182

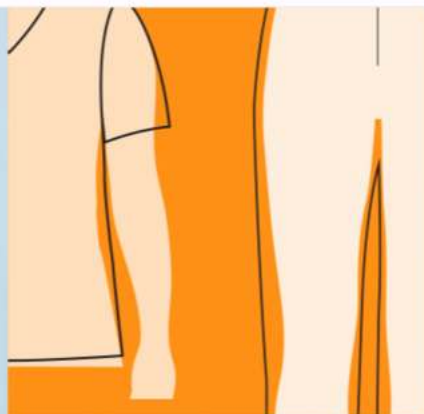
Email Us at : [custserv@hysupplies.com](mailto:custserv@hysupplies.com)

Website : <http://www.hysupplies.net>



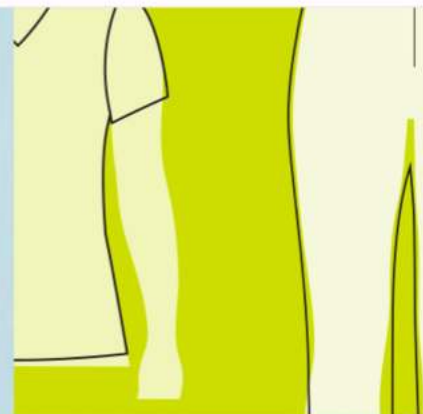
### CLASSIC

Generously cut to provide optimal comfort and ease of movement.



### MODERN

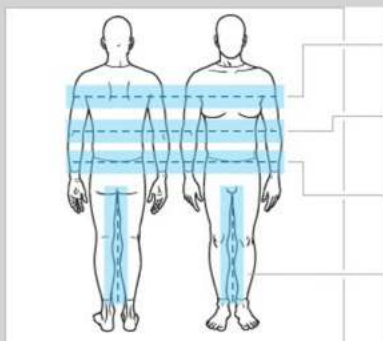
Tailored to flatter your shape without limiting movement.



### CONTEMPORARY

Contoured to conform to your body and complement your shape.

## MEASUREMENT TIPS



**Bust-** Measures the fullest part of your chest.

**Waist-** Bend to one side to the natural crease of your waist and measure across this point.

**Hip-** Standing with feet together, measure around the fullest part of your hips and rear.

**Inseam-** Measure from the bottom of the crotch seam to the bottom of the hem along the inside seam.

**Landau Men's/Unisex Lab Coat Size Chart:**

	XSM	SML	MED	LGE	XLG	2XL	3XL	4XL	5XL	6XL
<b>Numeric Size</b>	30-34	36-38	39-41	42-45	46-49	50-53	54-57	58-61	62-65	66-68
<b>Chest</b>	30-34	36-38	39-41	42-45	46-49	50-53	54-57	58-61	62-65	66-68